



# Ultimate Inswing French Door 2 1/4inch Arch Top

## Replacement Parts

Specifications and technical data are subject to change without notice.

Numbers listed in ( ) parentheses are metric equivalents in millimeters rounded to the nearest whole number.

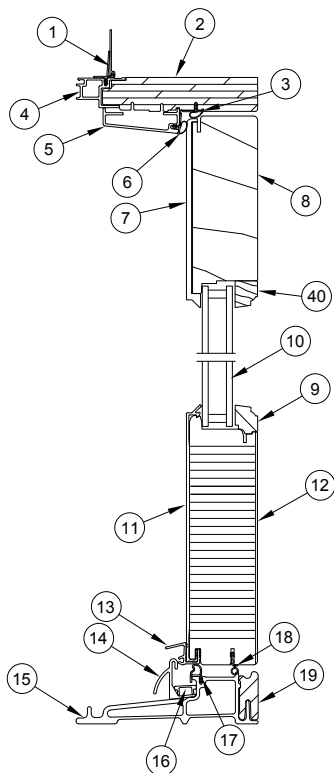
Suggested fasteners are not included and must be ordered separately.

Illustrations are not to scale.

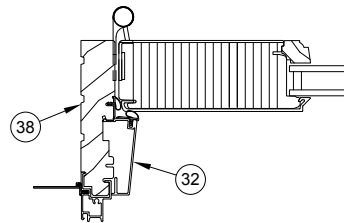
## Contents

Product History.....	2
Part Identification - Operator XX L.....	3
Installation Parts.....	4
Traditional Handle.....	5
Contemporary Handle .....	11
Handle - Keyed Cylinder.....	17
Handle Set - Discontinued Limited Availability (LA).....	18
Hinge Handing Location .....	20
Hinges.....	22
Locking Hardware .....	23
Lock Status Sensor Parts.....	26
Miscellaneous Parts .....	27
Miscellaneous Parts - Discontinued No Availability (NA).....	28
Aluminum Parts .....	29
Fiberglass Parts.....	30
Wood Parts.....	31
Wood Parts - Discontinued Limited Availability (LA) .....	32
Vinyl Parts.....	33
Weather Strip .....	34
Weather Strip - Discontinued No Availability (NA).....	36
Panel Replacement .....	37

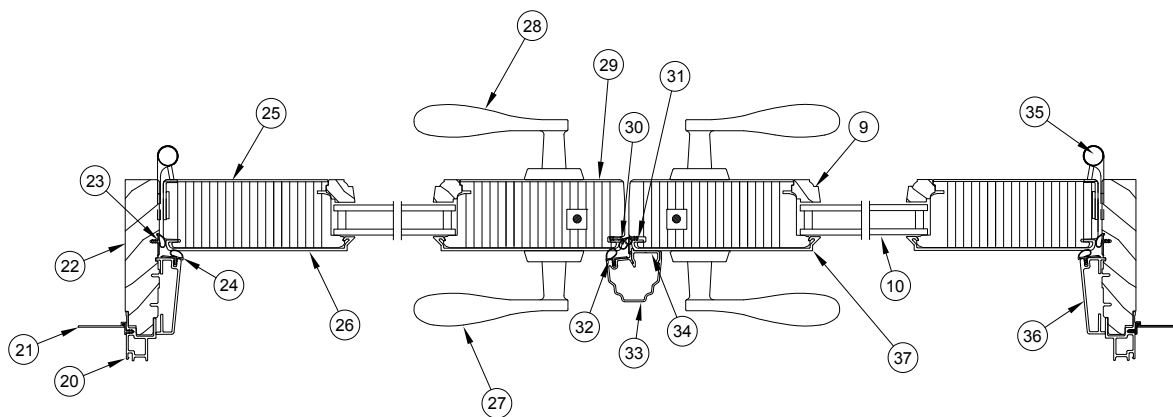
Produced	Unit Type	Features and Changes
2005	Ultimate Inswing French Door 2 1/4inch Arch Top	5/31/2005: 2 1/4inch Panel IZ3 doors introduced. Units feature multi-point lock, LVL stiles and rails, and 4 1/2" x 4 1/2" ball bearing hinges.
2006	Ultimate Inswing French Door 2 1/4inch Arch Top	11/20/2006: Introduced the 2 1/4inch door as a standard residential product.
2007	Ultimate Inswing French Door 2 1/4inch Arch Top	2/20/2007: Introduced raised and flat panels as a standard option.
2008	Ultimate Inswing French Door 2 1/4inch Arch Top	7/28/2008: Mixed grain Douglas fir is now a standard option.
2009	Ultimate Inswing French Door 2 1/4inch Arch Top	3/23/2009: Added LoE3-366 as a standard option for all products. Added Cedro Macho as a standard option for all Ultimate products.
2010	Ultimate Inswing French Door 2 1/4inch Arch Top	2/22/2010: Added Dark Bronze hardware finish to doors.
2011	Ultimate Inswing French Door 2 1/4inch Arch Top	4/25/2011: Added LoE-180 as a standard option for all products. White painted interior finish option introduced for all products.
2012	Ultimate Inswing French Door 2 1/4inch Arch Top	7/30/2012: Adjustable Hinge became standard. 10/29/2012: Interior Square Sticking/Glazing Bead option introduced. 12/17/2012: Introduced Clear Interior Finish option on all products.
2013	Ultimate Inswing French Door 2 1/4inch Arch Top	4/29/2013: Introduced interior stain options. Stain colors are Wheat, Honey, Leather, Hazelnut, Cabernet and Espresso. 12/16/2013: Interior Shades option introduced.
2014	Ultimate Inswing French Door 2 1/4inch Arch Top	2/24/2014: Introduced two Pearlescent colors (Bright Silver and Copper) and discontinued colors (Sherwood Green and Cobalt Blue) to the Ultimate Doors. Removed screen information and added new chapter for screen to manual. 4/28/2014: Added the Contemporary Panel and Contemporary Handle options. 6/23/2014: Added PVD color options for the Contemporary Handle; Oil Rubbed Bronze PVD and Satin Nickel PVD are now available. 8/25/2014: Panel drip and screws (A2408) will now match standard color. Screws for custom color will be stainless steel.
2016	Ultimate Inswing French Door 2 1/4inch Arch Top	10/31/2016: Discontinued the wood species Cedro Macho for all products.
2017	Ultimate Inswing French Door 2 1/4inch Arch Top	12/18/2017: Added availability of Lock Status Sensor.
2023	Ultimate Inswing French Door 2 1/4inch Arch Top	10/30/2023: An ERS coating became available as a standard option for current Triple Pane offerings. See Product Bulletin 904 for more details.



Head Jamb  
and Sill Detail



Clad Jamb  
Detail - RT6

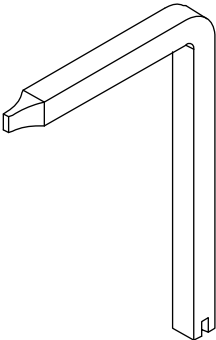


Clad Jamb Detail XX  
L-RT2

1. Nailing Fin/Drip Cap
2. Head Jamb
3. Head Jamb Weather Strip, V796
4. Head Jamb Cladding
5. Head Jamb Stop
6. Head Jamb Stop Weather Strip, V796
7. Top Rail Cladding
8. Top Rail
9. Glazing Bead, W9949
10. Insulating Glass
11. Bottom Rail Cladding
12. Bottom Rail
13. Panel Drip, V940
14. Hydro-Optimizer, A1251
15. Sill, F256
16. Hydro-Optimizer Reinforcement, A1222
17. Sill Weather Strip, V794
18. Stile Weather Strip, V020
19. Sill Liner, W8661
20. Jamb Cladding
21. Nailing Fin
22. Jamb - RT2
23. Jamb Weather Strip, V796
24. Jamb Stop Weather Strip, V796
25. Stile
26. Stile Cladding
27. Exterior Handle
28. Interior Handle
29. Active Panel Locking Stile
30. Stile Weather Strip, V020
31. Mull Base Stile Weather Strip, V780
32. Astragal Weather Strip, V796
33. Astragal, A772
34. Astragal Base, A771
35. Adjustable Hinge
36. Side Jamb Parting Stop - RT2
37. Inactive Panel Locking Stile
38. Jamb RT6
39. Side Jamb Parting Stop - RT6
40. Radiused Glazing Bead

# Construction Handle

Color	PN
Black	10830451



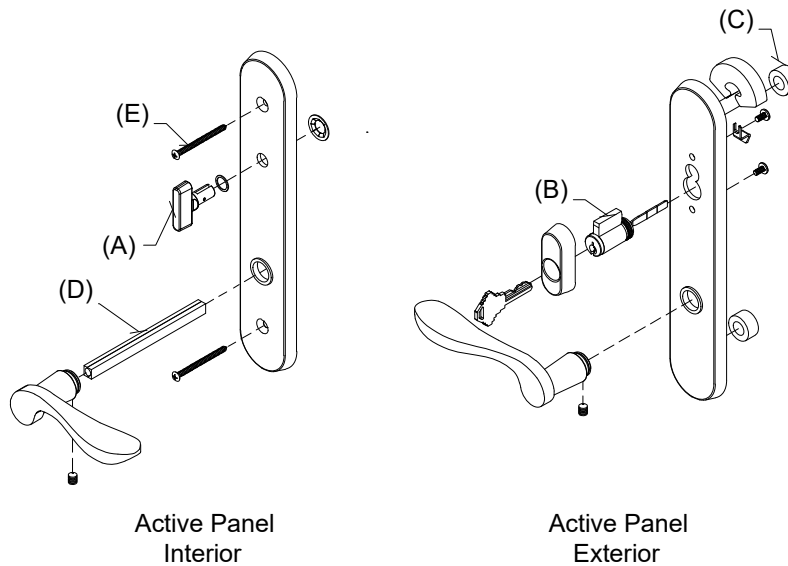
## Handle Assembly, Active, Keyed

Mortise Lock and Multi-Point Lock Systems (Schlage "C" Keyway)

### Includes:

- 1 - Interior lever with spindle, escutcheon plate and hardware
- 1 - Exterior lever with escutcheon plate and hardware
- 1 - Thumb turn with hardware (A)
- 1 - Keyed cylinder with housing and hardware (B)
- 1 - Exterior escutcheon plate gasket
- 2 - Lug Seal (C)
- 1 - Two piece spindle, 5.06" w/2 1/4" panel (D)
- 2 - #10-32 x 2 5/8" Phillips oval head machine screws (w/2 1/4" Panel) (E)
- 2 - Keys

Handle Assembly - 2 1/4" Panel	
Color	PN
Satin Taupe	21448114
Antique Brass	21448116
White	21448119
Satin Chrome	21448112
Oil Rubbed Bronze	21448111
Oil Rubbed Bronze PVD	21448118
Brass PVD	21448160
Satin Nickel PVD	21448110
Dark Bronze	21448120
Polished Chrome	21448117
Matte Black	21448131



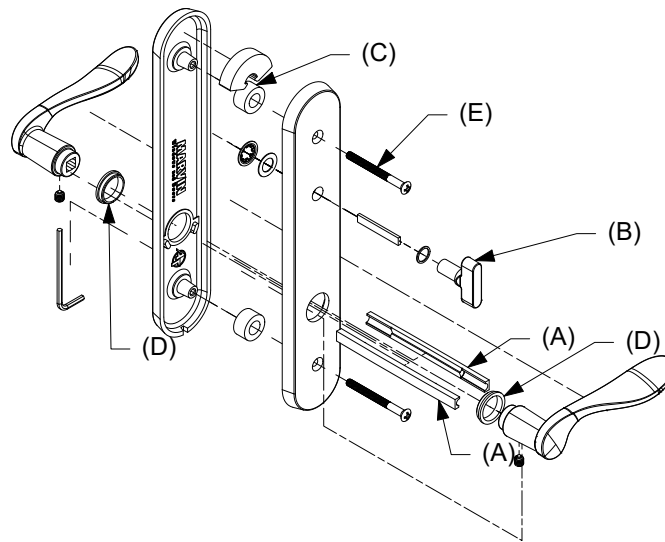
## Handle Assembly, Active, Non-Keyed

Mortise Lock and Multi-Point Lock Systems (Schlage "C" Keyway)

### Includes:

- 2 - Levers
- 2 - Lever bushings (D)
- 2 - Lug seals (C)
- 1 - Interior escutcheon
- 1 - Exterior escutcheon
- 1 - Thumb turn with actuator/tail piece (B)
- 1 - Two piece spindle, 5.06" w/2 1/4" panel (A)
- 2 - #10-32 x 2 5/8" Phillips oval head machine screws (w/2 1/4" Panel) (E)
- 2 - Set screws
- 1 - Allen wrench
- 1 - Installation instruction

Handle Assembly - 2 1/4" Panel	
Color	PN
Satin Taupe	21448174
Antique Brass	21448180
White	21448176
Satin Chrome	21448173
Oil Rubbed Bronze	21448172
Oil Rubbed Bronze PVD	21448170
Brass PVD	21448177
Satin Nickel PVD	21448181
Dark Bronze	21448178
Polished Chrome	21448175
Matte Black	21448179

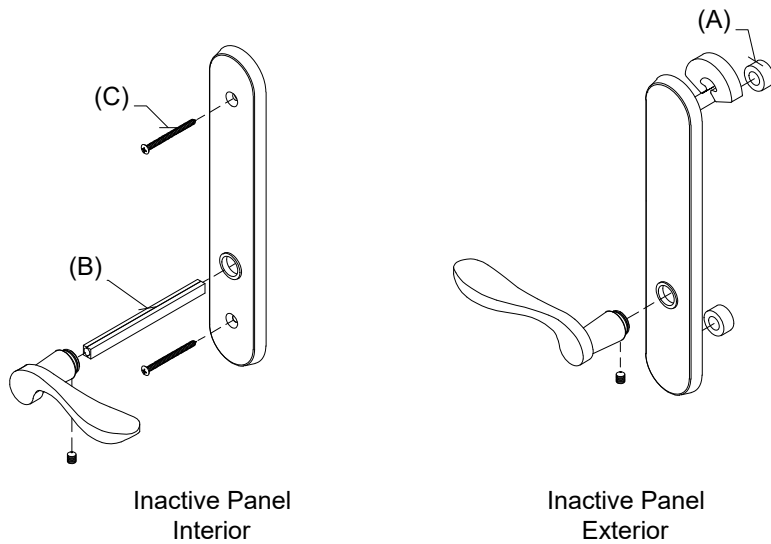


## Handle Assembly, Inactive/Dummy

### Includes:

- 1 - Interior lever with spindle, escutcheon plate and hardware
- 1 - Exterior lever with escutcheon plate and hardware
- 1 - Exterior escutcheon plate gasket
- 1 - Exterior escutcheon plate
- 2 - Lug seals (A)
- 1 - Two piece spindle, 5.06" (w/2 1/4" panel) (B)
- 2 - #10-32 x 2 5/8" Phillips oval head machine screws (w/2 1/4" Panel) (C)

Handle Assembly - 2 1/4" Panel	
Color	PN
Satin Taupe	21448151
Antique Brass	21448147
White	21448150
Satin Chrome	21448153
Oil Rubbed Bronze	21448154
Oil Rubbed Bronze PVD	21448145
Brass PVD	21448161
Satin Nickel PVD	21448133
Dark Bronze	21448162
Polished Chrome	21448148
Matte Black	21448163



Inactive Panel  
Interior

Inactive Panel  
Exterior

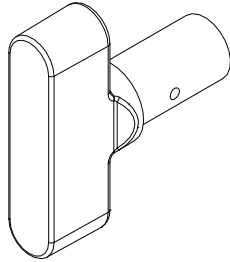
## Thumb Turn, Traditional

For Keyed Handle

### Includes:

Thumb Turn Washer  
Thumb Turn Push Nut

No Tail Piece/Actuator (for keyed handle)	
Color	PN
Antique Brass	10148483
Satin Chrome	10148482
Oil Rubbed Bronze	10148481
Oil Rubbed Bronze PVD	10148485
Polished Chrome	10148488
Brass PVD	10148484
Satin Nickel PVD	10148487
Satin Taupe	10148486
Dark Bronze	10148479
White	10148489
Matte Black	10148480



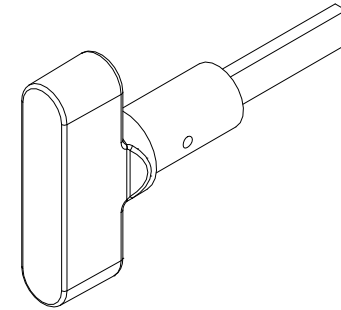
## Thumb Turn, Traditional with Actuator/Tail Piece

For Non-Keyed Handle

### Includes:

Actuator/Tailpiece  
Thumb Turn Washer  
Thumb Turn Push Nut

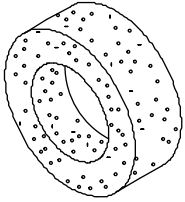
With Tail Piece/Actuator (for non-keyed handle)	
Color	PN
Antique Brass	10148495
Satin Chrome	10148494
Oil Rubbed Bronze	10148493
Oil Rubbed Bronze PVD	10148497
Polished Chrome	10148500
Brass PVD	10148496
Satin Nickel PVD	10148499
Satin Taupe	10148498
Dark Bronze	10148491
White	10148501
Matte Black	10148492





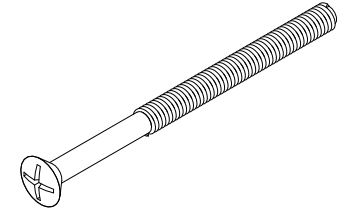
## Lug Seals

PN
00142046



## #10-32 x 2 5/8" Phillips Oval Head Machine Screw

Color	PN
Satin Taupe	11800237
Antique Brass	11800234
Satin Chrome	11800233
Polished Chrome	11800239
White	11800240
Oil Rubbed Bronze	11800232
Oil Rubbed Bronze PVD	11800236
Brass PVD	11800235
Satin Nickel PVD	11800238
Dark Bronze	11800231
Matte Black	11800179

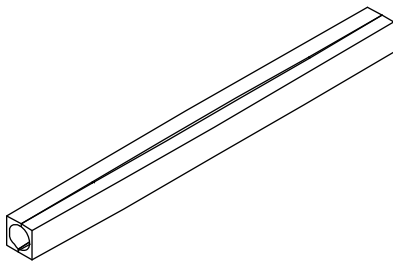


## 3/4" Spindle Extension Kit (Ashland and Truth)

### Includes:

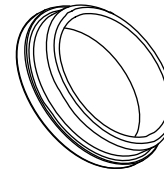
- 1 - 2-piece spindle, 5 1/16"
- 2 - Set screws

PN
18900393



## Lever Bushing, Swinging Handle Set - Traditional

Color	PN
Clear	02062201
Gray	10148448
Gold	10148447
Natural	02062202
Black	10148020

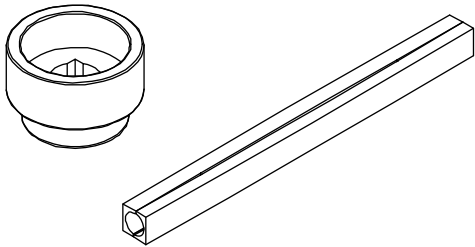


## 2 1/4inch Swinging Handle Set Kit - Interior Shades

### Includes:

- 1 - 3/4" extension handle
- 1 - Spindle, lever handle, 2 pc. assembly
- 1 - Installation instruction

Color	PN
Satin Taupe	18900659
Antique Brass	18900662
Satin Chrome	18900665
White	18900660
Oil Rubbed Bronze	18900663
Oil Rubbed Bronze PVD	18900664
Brass PVD	18900661
Satin Nickel PVD	18900666
Dark Bronze	18900667
Matte Black	18900689
Polished Chrome	18900668

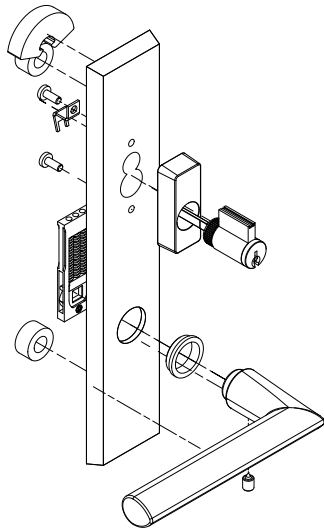


## Contemporary Handle, Exterior, Active, Keyed

### Includes:

- 1 - Handle
- 1 - Exterior escutcheon with bushing
- 1 - Keyed cylinder
- 2 - Lug seals
- 1 - Spring cartridge
- 1 - Set screw
- 1 - Installation instruction
- 1 - Hex wrench

LH Inswing Panel uses LH PN RH Inswing Panel uses RH PN		
Color	LH PN	RH PN
Matte Black	11870120	11870112
Satin Nickel PVD	11870122	11870114
Oil Rubbed Bronze PVD	11870124	11870116
Dark Bronze	11870126	11870118



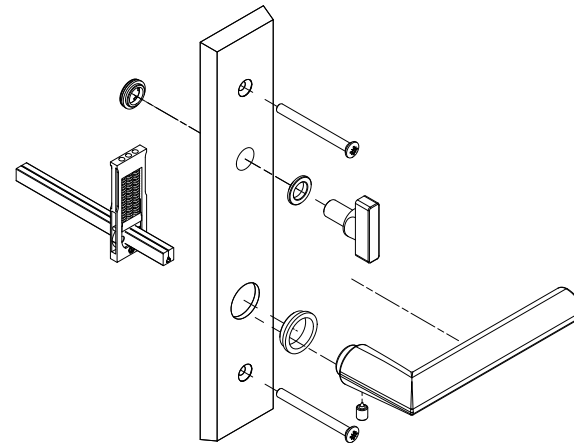
LH shown

## Contemporary Handle, Interior, Active, Keyed

### Includes:

- 1 - Handle
- 1 - Interior escutcheon with bushings
- 1 - Spring cartridge
- 1 - Thumb turn
- 2 - Machine screws, 2 1/4" Doors
- 2 - Machine screws, 1 3/4" Doors
- 1 - Split spindle, 2 1/4" Doors
- 1 - Split spindle, 1 3/4" Doors
- 1 - Set screw
- 1 - Installation instruction
- 1 - Hex wrench

LH Inswing Panel uses RH PN RH Inswing Panel uses LH PN		
Color	LH PN	RH PN
Matte Black	11870104	11870097
Satin Nickel PVD	11870106	11870098
Oil Rubbed Bronze PVD	11870108	11870100
Dark Bronze	11870110	11870102



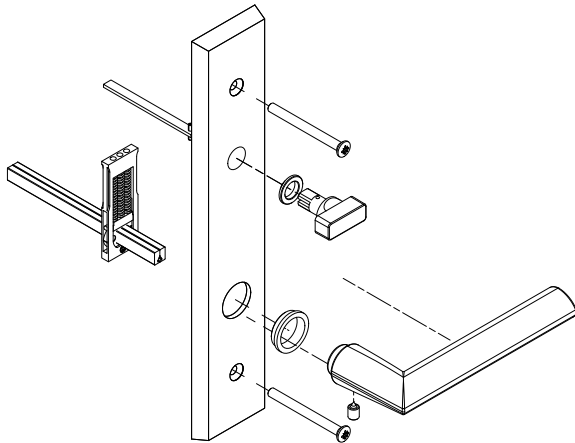
RH shown

# Contemporary Handle, Interior, Active, Non-Keyed

## Includes:

- 1 - Handle
- 1 - Interior escutcheon with bushings
- 1 - Spring cartridge
- 1 - Thumb turn
- 2 - Machine screws, 2 1/4" Doors
- 2 - Machine screws, 1 3/4" Doors
- 1 - Split spindle, 2 1/4" Doors
- 1 - Split spindle, 1 3/4" Doors
- 1 - Set screw
- 1 - Installation instruction
- 1 - Hex wrench

LH Inswing Panel uses RH PN RH Inswing Panel uses LH PN		
Color	LH PN	RH PN
Matte Black	11870136	11870128
Satin Nickel PVD	11870138	11870130
Oil Rubbed Bronze PVD	11870139	11870132
Dark Bronze	11870143	11870133



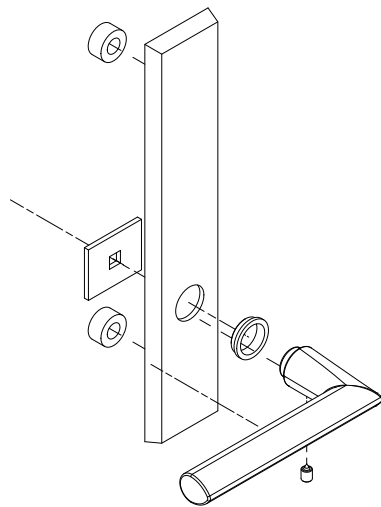
RH shown

## Contemporary Handle, Exterior, Non-Keyed, Inactive/Dummy

### Includes:

- 1 - Handle
- 1 - Exterior escutcheon with bushings
- 2 - Lug seals
- 1 - Fixing plate
- 1 - Set screw
- 1 - Installation instruction
- 1 - Hex wrench

LH Inswing Panel uses LH PN RH Inswing Panel uses RH PN		
Color	LH PN	RH PN
Matte Black	11870153	11870145
Satin Nickel PVD	11870154	11870146
Oil Rubbed Bronze PVD	11870156	11870148
Dark Bronze	11870158	11870149



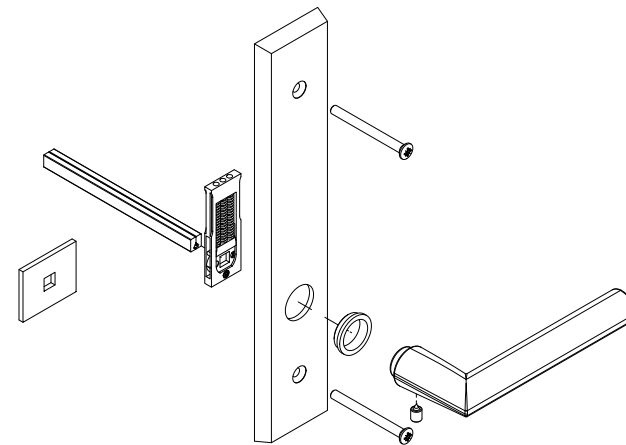
LH shown

## Contemporary Handle, Interior, Inactive/Dummy

### Includes:

- 1 - Handle
- 1 - Escutcheon with bushing
- 1 - Dummy fixing plate
- 1 - Spring cartridge
- 2 - Machine screws, 2 1/4" Doors
- 2 - Machine screws, 1 3/4" Doors
- 1 - Split spindle, 2 1/4" Doors
- 1 - Split spindle, 1 3/4" Doors
- 1 - Set screw
- 1 - Installation instruction
- 1 - Hex wrench

LH Inswing Panel uses RH PN RH Inswing Panel uses LH PN		
Color	LH PN	RH PN
Matte Black	11870169	11870160
Satin Nickel PVD	11870171	11870162
Oil Rubbed Bronze PVD	11870172	11870164
Dark Bronze	11870174	11870166



RH shown

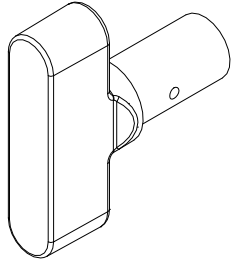
## Thumb Turn, Contemporary

For Keyed Handle

### Includes:

- Thumb Turn Washer
- Thumb Turn Push Nut

No Tail Piece/Actuator (for keyed handle)	
Color	PN
Oil Rubbed Bronze PVD	10148485
Satin Nickel PVD	10148487
Dark Bronze	10148479
Matte Black	10148480



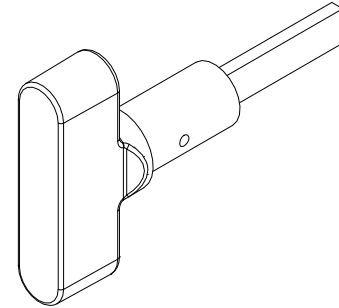
## Thumb Turn, Contemporary with Actuator/Tail Piece

For Non-Keyed Handle

### Includes:

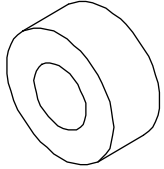
- Actuator/Tailpiece
- Thumb Turn Washer
- Thumb Turn Push Nut

With Tail Piece/Actuator (for non-keyed handle)	
Color	PN
Oil Rubbed Bronze PVD	10148497
Satin Nickel PVD	10148499
Dark Bronze	10148491
Matte Black	10148492



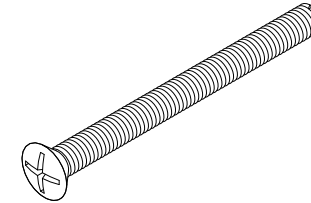
## Gasket Post

PN
10148404



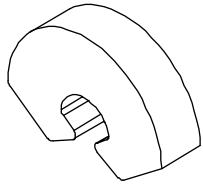
## M5 x 65mm Phillips Oval Head Machine Screw

Color	PN
Oil Rubbed Bronze PVD	10148404
Satin Nickel PVD	10148457
Dark Bronze	10148455
Matte Black	11800694



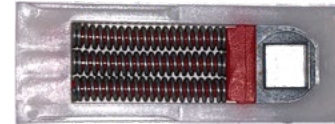
## Gasket - Top Backplate

PN
10148405



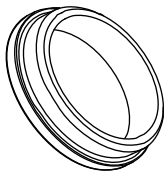
## Spring Cartridge, Swinging Handle Set - Contemporary

PN
10830452



## Lever Bushing, Swinging Handle Set - Contemporary

Color	PN
Gray	10148448
Natural	02062202
Black	10148020



## Spindle Kit (HOPPE)

### Includes:

- 1 - 2 piece, spindle, 5 1/8"
- 2 - Set screws

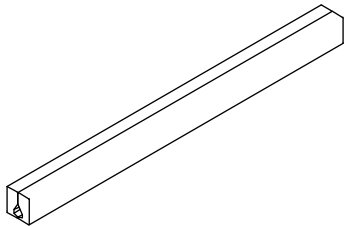
PN
10148458

## 3/4" Spindle Extension Kit (HOPPE)

### Includes:

- 1 - 2 piece, spindle, 5 3/32"
- 2 - Set screws

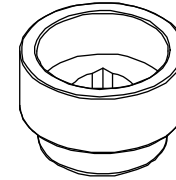
PN
10148459



## 3/4" Handle Extension

Requires 3/4" Spindle Extension

Color	PN
Oil Rubbed Bronze PVD	10148421
Satin Nickel PVD	10148422
Dark Bronze	10148420
Matte Black	10148445

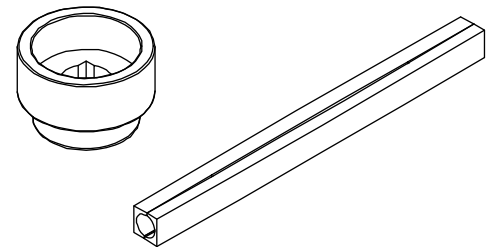


## Swinging Handle Set Kit, 2 1/4inch - Interior Shades

### Includes:

- 1 - 3/4" extension handle
- 1 - Spindle, lever handle, 2 pc. assembly
- 1 - Installation instruction

Color	PN
Oil Rubbed Bronze PVD	21448106
Satin Nickel PVD	21448107
Dark Bronze	21448105
Matte Black	21448108





## Keyed Cylinder, Lock

(Schlage "C" Keyway)

For service replacement only.

### Includes:

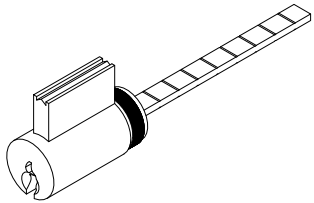
2 - Keys

NOTE: For Keyed Alike orders, use program C87P2

Polished Chrome, White, Satin Nickel PVD, Matte Black use  
Chrome Face

Satin Taupe, Antique Brass, Satin Chrome, Oil Rubbed  
Bronze, Oil Rubbed Bronze PVD, Brass PVD, Dark Bronze  
use Brass Face

Color	PN
Brass	10830212
Chrome	10830209

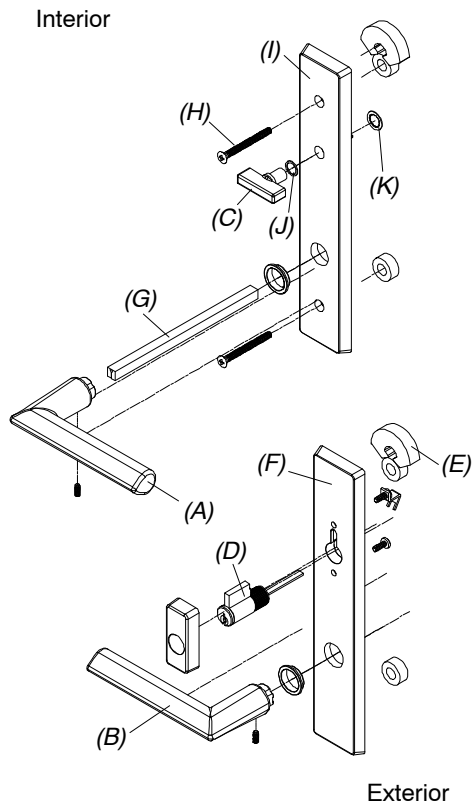


## Handle Assembly, Active Panel

### Includes:

- 1 - Interior lever with spindle, escutcheon plate and hardware - a
- 1 - Exterior lever with escutcheon plate and hardware - b
- 1 - Thumb turn with hardware - c
- 1 - Keyed cylinder with housing and hardware - d
- 1 - Exterior escutcheon plate gasket - e
- 1 - Exterior escutcheon plate - f
- 1 - Two piece spindle - g
- 2 - M5 x 65mm Phillips oval head machine screws - h
- 1 - Interior escutcheon plate - i
- 1 - Thumb turn washer - j
- 1 - Thumb turn push nut - k
- 2 - keys

Color	PN
Satin Taupe	21448121

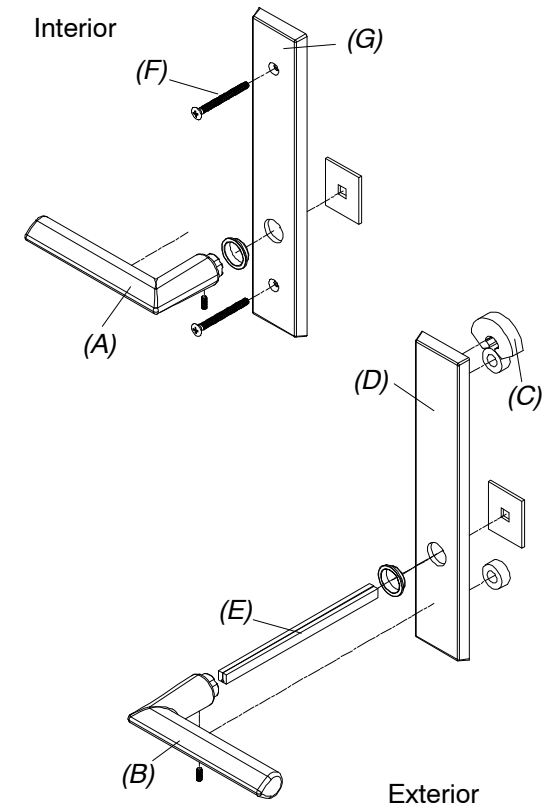


## Handle Assembly, Inactive

### Includes:

- 1 - Interior lever with spindle, escutcheon plate and hardware - a
- 1 - Exterior lever with escutcheon plate and hardware - b
- 1 - Exterior escutcheon plate gasket - c
- 1 - Exterior escutcheon plate - d
- 1 - Two piece spindle - e
- 2 - M5 x 65mm Phillips oval head machine screws - f
- 1 - Interior escutcheon plate - g

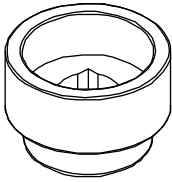
Color	PN
Satin Taupe	21448125



## 3/4" Handle Extension

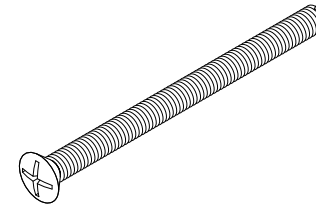
Requires 3/4" Spindle Extension

Color	PN
Satin Taupe	10148419



## M5 x 65mm Phillips Oval Head Machine Screw

Color	PN
Satin Taupe	10148454

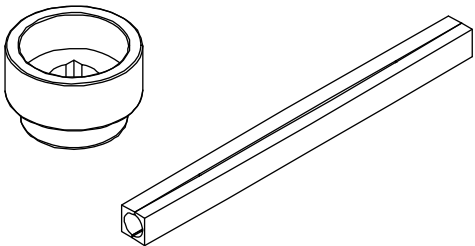


## Swinging Handle Set Kit, 2 1/4inch - Interior Shades

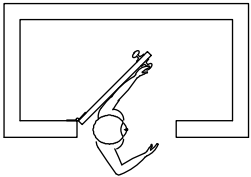
### Includes:

- 1 - 3/4" extension handle
- 1 - Spindle, lever handle, 2 pc. assembly
- 1 - Installation instruction

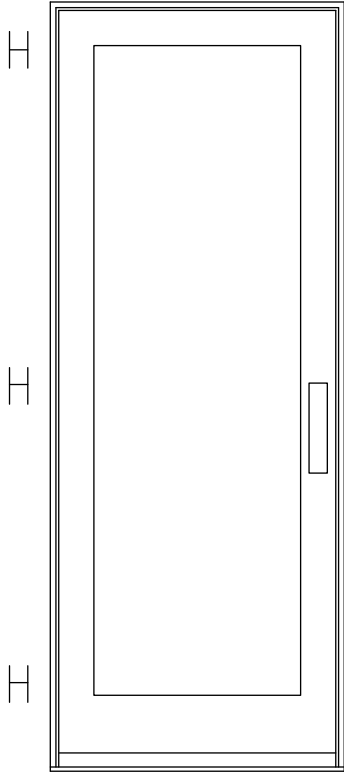
Color	PN
Satin Taupe	21448104



**NOTE: Always view units from the exterior for handing.**  
**H=Hinge location**

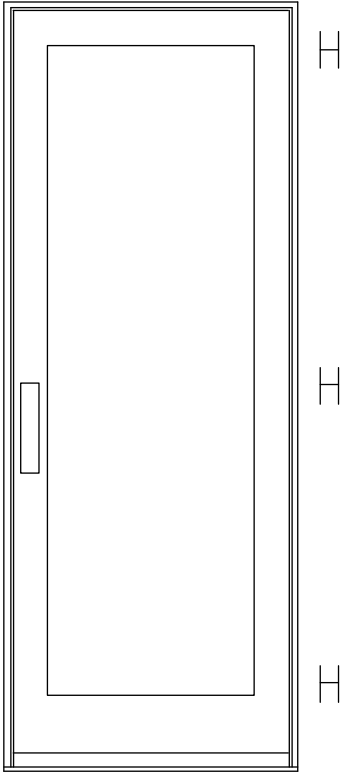


LH Inswing



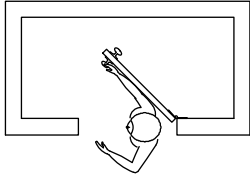
**X-LH Inswing**

This panel uses the left hand hinge



**X-RH Inswing**

This panel uses the right hand hinge



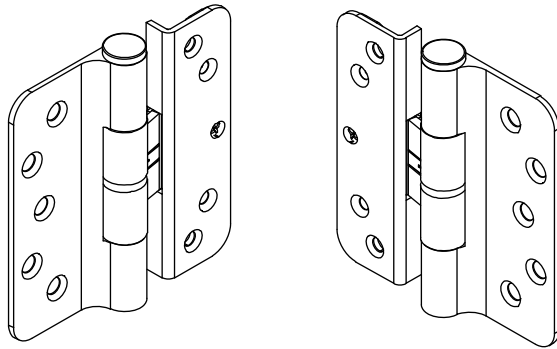
RH Inswing

# Hinge Kit, Adjustable

## Includes:

- 1 - Adjustable hinge
- 1 - #10 x 2 1/2" Phillips flat head wood screws (jamb)
- 5 - #10 x 3/4" Phillips flat head wood screws (jamb, stationary stile)
- 4 - #8 x 1 1/2" Phillips flat head wood screws (panel)

NOTE: Hinge part number includes the color matched screws, If you need to order the screws separately, they are listed below.



LH Hinge

RH Hinge

Hinge Color	LH PN	RH PN
Satin Taupe (TP)	02101216	02101227
Goldtone (GT)	02101213	02101224
Silver Frost (SF)	02101218	02101229
Dark Bronze (DKBZ)	02101217	02101228
Antique Brass (AB)	02101210	02101221
White (WH)	02101214	02101225
Satin Chrome (SC)	02101212	02101223
Oil Rubbed Bronze (ORBZ)	02101219	02101230
Oil Rubbed Bronze PVD (ORBZ)	02101211	02101222
Brass PVD (BS)	02101215	02101226
Satin Nickel (SN) PVD	02101220	02101231
Polished Chrome (PC)	02101234	02101235
Matte Black (MBK)	02101236	02101237

Screw Color	Matching Hinge Color
TP	TP
GT	GT
WH	WH
DKBZ	AB, ORBZ PVD, DKBZ, ORBZ
BS PVD	BS PVD
Stainless Steel	SC, SF, SN PVD, PC
Chrome	SC, SF, SN PVD, PC
MBK	MBK

Screw Description	TP PN	GT PN	WH PN	DK BZ PN	BS PVD PN	Stainless Steel PN	Chrome PN	MBK PN
#8 x 1 1/2" Phillips flat head wood screws (panel). Quantity of four needed per hinge.	11865177	11865172	11865173	02058013	11865176	11865175		11865178
#10 x 3/4" Phillips flat head wood screws (jamb) (stationary stile). Quantity of five needed per hinge.	11800674	11800670	11800671	11800669	11800673		11800672	11800677
#10 x 2 1/2" Phillips flat head wood screws (jamb). Quantity of one needed per hinge.	11800653	11800632	11800637	11800644	10148185	11800639		11800696
NOTE: Part numbers for these screws are sold in packages of 4 screws and includes 1 - 5/32" Allen wrench.								

## Hinge 4 1/2" x 4 1/2" Ball Bearing

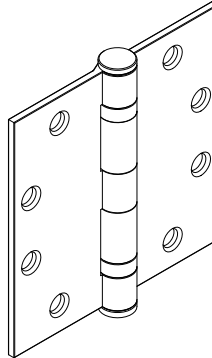
### Includes:

- 1 - Hinge
- 6 - #12 x 1" Phillips flat head wood screws
- 2 - #12 x 2 1/2" Phillips flat head screws

NOTE: Hinge part number includes the color matched screws, if you need to order the screws separately, they are listed below.

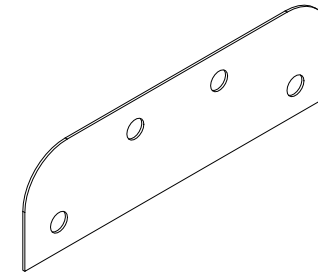
Hinge Color	PN
Stainless Steel	02100162
Satin Chrome/Brass	02101166
Bronze/Brass	02101167
Brass	02101165
<b>Steel hinge available for Inswing Doors only</b>	
Satin Chrome/Steel	02101163
Bronze/Steel	02101164

Screw Description	Color	PN
#12 x 1" Phillips flat head wood screws	Stainless Steel	02056069
	Dark Bronze	02056010
	Brass	02056068
#12 x 2 1/2" Phillips flat head screws	Stainless Steel	02010311
	Dark Bronze	02056067
	Brass	02010310



## 4 1/2" x 4 1/2" Hinge Shim

PN
18900502



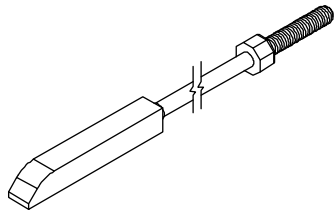
Hinge Color	Screw Color
Stainless Steel	Stainless Steel
Satin Chrome/Steel	
Satin Chrome/Brass	
Bronze/Steel	Dark Bronze
Bronze/Brass	
Brass	Brass

SC = US26D
BZ = US10A
BS = US3
SS = US32D

## Locking Rod Assembly, Multi-Point Lock

Height	Top Locking Rod Length	Color	PN
CN 8-0 ht	51 7/16"	Stainless Steel	05700179
CN 10-0 ht	75 7/16"		05700196

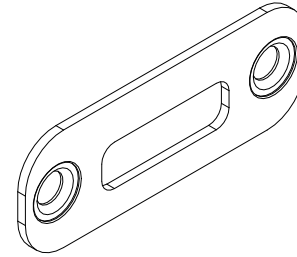
Height	Bottom Locking Rod Length	Color	PN
CN 8-0 ht	34 9/32"	Stainless Steel	05700170
CN 10-0 ht			



## Head Jamb/Sill Strike Plate

Used at head jamb and sill

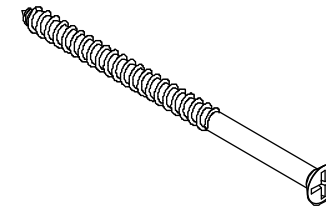
PN
05700082



## #10 x 3" Phillips Flat Head Screws

For Head Jamb Strike Plate at installation.

Color	PN
Stainless Steel	02056011



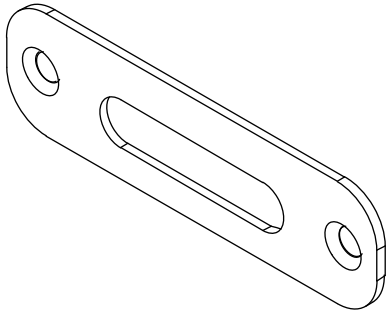
## Head Strike

RT2 one wide

### Includes:

- 1 - Strike
- 2 - #10 x 3" Phillips flat head screws

PN
05700319

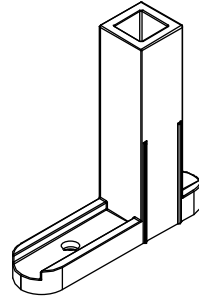


## Shoot Bolt Guide

### Includes:

- 1 - Shoot bolt guide
- 1- #8 x 1 1/2" Phillips pan head wood screw

PN
10815199

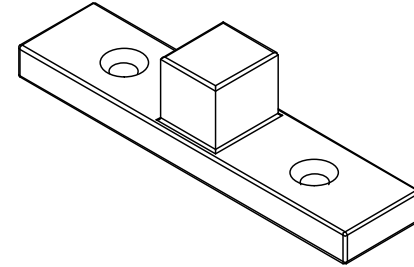


## Sill Bolt, Stationary Panel

### Includes:

- 2- #8 x 3" Phillips flat head wood screw

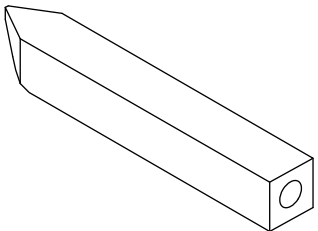
Color	PN
Zinc Die Cast	11101856



## Shoot Bolt, Beveled

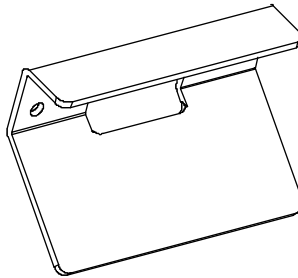
RT2 one wide

PN
10815101



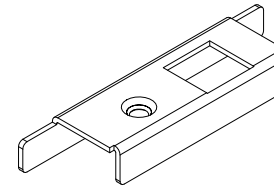
## Sill Strike Backer Plate

PN
10148009



## Stile End Plate

Handing	PN
LH	10148008
RH	10148007





## Strike Plate, Jamb and Inactive Panel - Mortise Lock or Multi-Point Lock

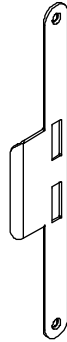
### Includes:

1 - Jamb strike plate

2 - #8x1" Brass Phillips flat head wood screws

Note: Dark Bronze screws are used with Antique Brass and Oil Rubbed Bronze PVD

Color	PN
Stainless Steel	05700300
Antique Brass	05700301
Oil Rubbed Bronze PVD	05700302
Brass PVD	10148177



## Cover Plate, Active Mortise Lock or Multi-Point Lock

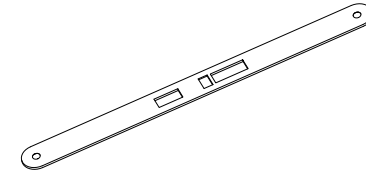
### Includes:

1 - Cover plate

2 - #8 x 1" Brass Phillips flat head wood screws

Note: Dark Bronze screws are used with Antique Brass and Oil Rubbed Bronze PVD

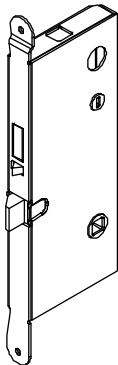
Color	PN
Stainless Steel	05700306
Antique Brass	05700307
Oil Rubbed Bronze PVD	05700308
Brass PVD	10148179



## Mortise Lock, Active Multi-Point Lock

(Latch, dead bolt and head/foot shoot bolts)

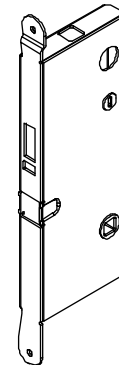
PN
05700130



## Mortise Lock, Inactive Panel Multi-Point Lock

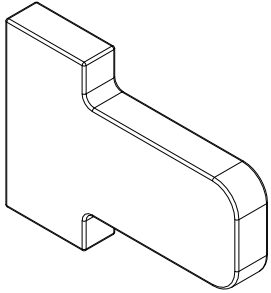
(Head/foot shoot bolts)

PN
05700131



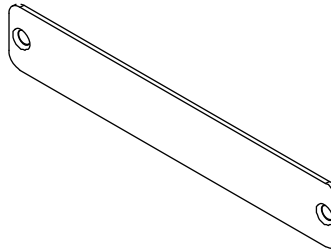
## Tailpiece, Non-keyed, Button Switch

Color	PN
Stainless Steel	10501844



## Cover, Transmitter

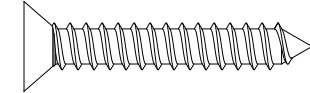
Color	PN
Brushed Stainless Steel	10501822



## #8-18 x 1" Type AB, Full Thread

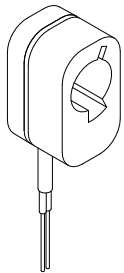
Used for Transmitter Cover  
Need quantity of 2 for each part

PN
11800769



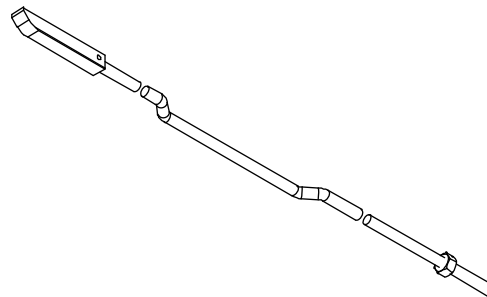
## Micro Switch Assembly

Color	PN
Black	10501824



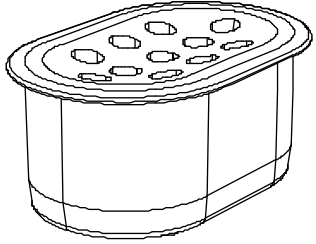
## Lock Rod, Transmitter Recess, Shoot Bolt

Color	LH PN	RH PN
Brushed Stainless Steel	10501838	10501841



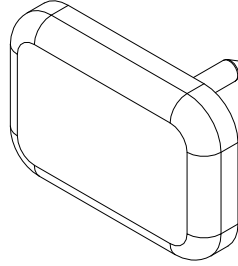
## Drain Plug, Sill

Color	PN
Beige	10500253
Bronze	10500249



## Head Jamb Spacer Tack; Stationary Panel

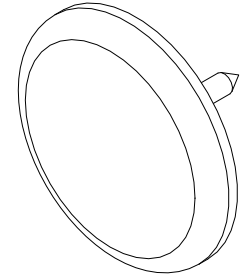
PN
11860424



## Jamb Spacer Tack, Stationary Panel

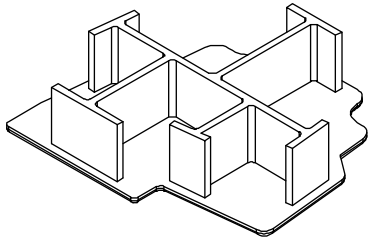
3/4" Diameter Head

PN
11860423



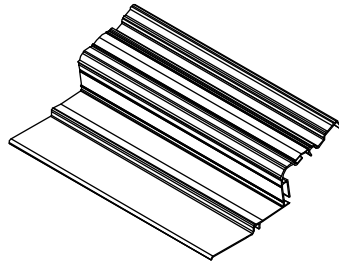
## Mull Casing End Plug, Ultimate

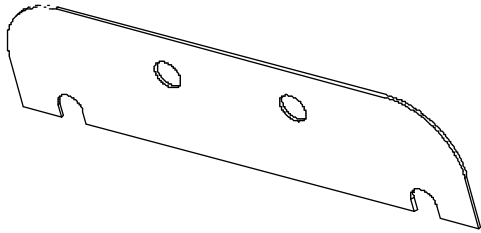
Color	LH PN	RH PN
Beige	10500255	10500254
Bronze	10500267	10500266



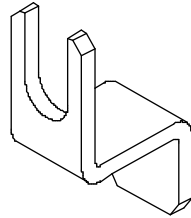
## Threshold Protector

Length	U/M	PN
30"	EA	11869675
	Pkg 20	11869676

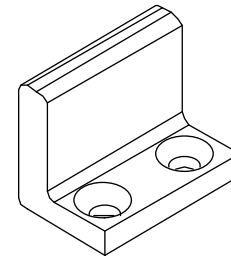




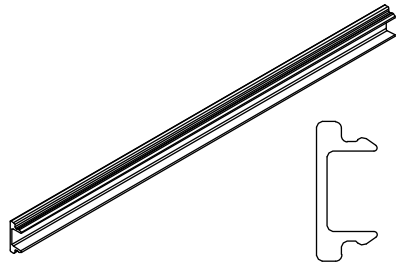
**4 1/2" x 4 1/2" Hinge Shim Ultimate Frame**  
No longer available, use current part.



**Stop clip with screws**  
No longer available, use current part.



**Header Reinforcement Bracket**  
No longer available, use current part.  
Used prior to 8/31/2009

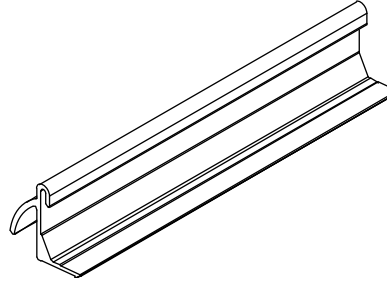


**Hydro-Optimizer Reinforcement, Inswing, A1222**

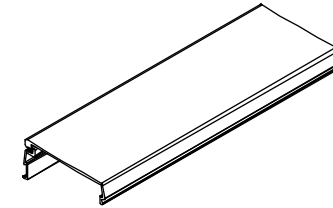
Length	Color	PN
144"	Beige	18548499
	Bronze	18548399

**When ordering replacement parts, specify:**

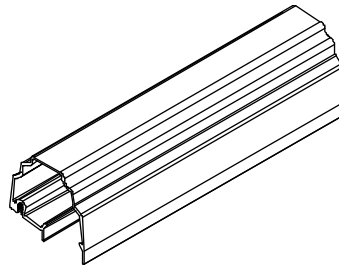
1. Profile number;
2. rough opening;
3. length;
4. handing;
5. finish (where applicable).



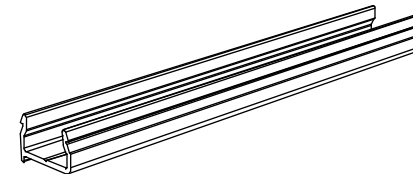
**Hydro-Optimizer, A1251**  
Available in Beige or Bronze



**Head Jamb/Jamb Parting Stop, A836**



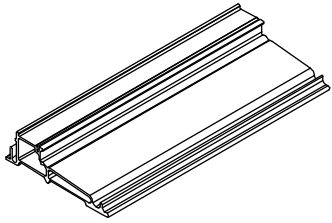
**Astragal Cladding, A772**



**Mullion Casing Base, A771**

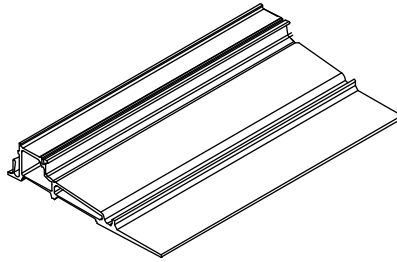
**When ordering replacement parts, specify:**

1. Profile number;
2. rough opening;
3. length;
4. handing;
5. finish (where applicable).



**Ultrex Sill, 4 9/16" Jamb, Inswing, F256**

Available in Beige or Bronze

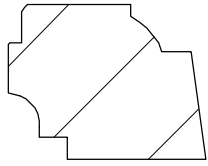


**Ultrex Sill, 6 9/16" Jamb, F257**

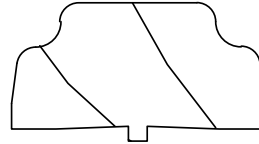
Available in Beige or Bronze

**When ordering replacement parts, specify:**

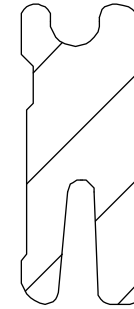
1. Profile number;
2. Rough opening;
3. Length;
4. Handing;
5. Finish (where applicable),



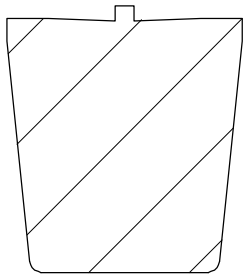
**Glazing Cap, W9949**



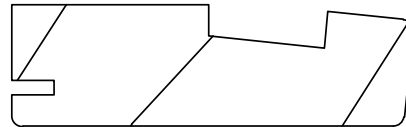
**Astragal Cover and Transom Mull Cover,  
W7554**



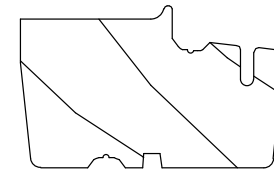
**Sill Liner (Oak), W8661**



**Mull Casing, W8775**



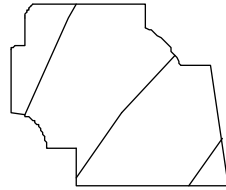
**Head Jamb/Jamb Parting Stop, W6535**



**First Mull Casing and Astragal, W1455**

**When ordering replacement parts, specify:**

1. Profile number;
2. Rough opening;
3. Length;
4. Handing;
5. Finish (where applicable),



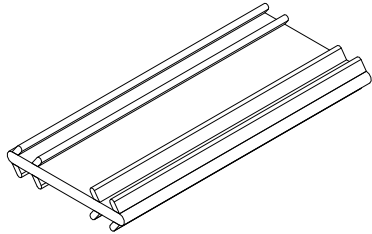
**Glazing Cap Used prior to May 2008, W4019**



## Connecting Barb

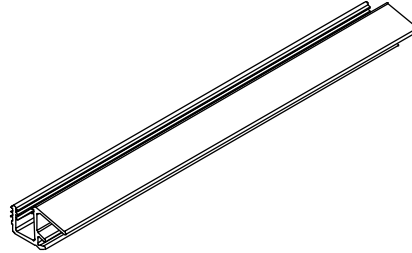
V803

Length	PN
Specify Length	15812999



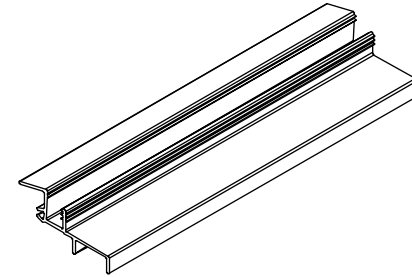
## When ordering replacement parts, specify:

1. Profile number;
2. Rough opening;
3. Length;
4. Handing;
5. Finish (where applicable),



**Panel Drip, Inswing, V940**

Available in Beige or Black



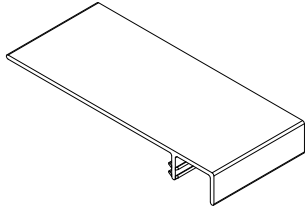
**Stationary Panel Drip/Sill Spacer,  
Inswing, V941**

Available in Beige or Black

## Weather Strip, Frame

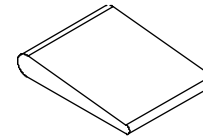
V1707

Length	Color	PN
120"	Beige	11191299
	Black	11191399



## Small Corner Seal

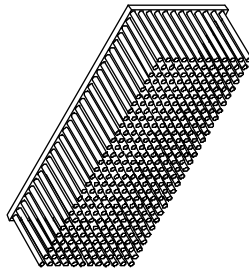
Color	PN
Beige	01040368
Black	01040369



## Dust Block, Part Stop

1 3/8" x 3/8" x 1/2"

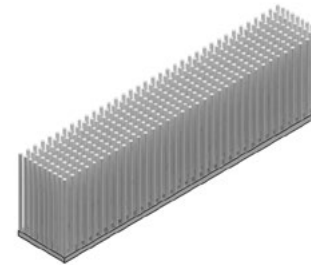
Color	PN
Gray	15600010
Beige	15600011



## Dust Block, Astragal or Panel

1 3/8" x 1/4" x 1/2"

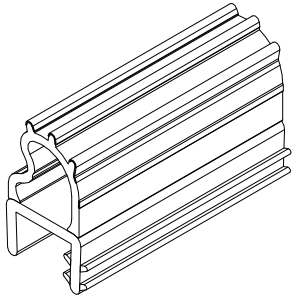
PN
10500049



## Flex-Bulb Weather Strip, Sill

V794

Length	Color	PN
92 3/4"	Beige	15180780
164 3/4"	Beige	15180798
164 3/4"	Black	15180799

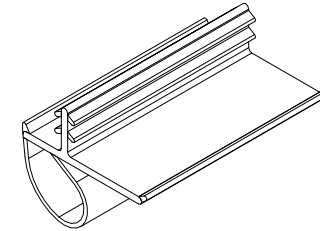


## Offset Bulb Weather Strip

V796

Parting Stop, Frame, Mull Casing, Transom and Astragal

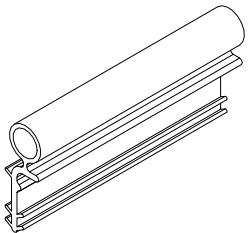
Length	Color	PN
75 43/64"	Beige	15170866
	Black	15170867
104 7/8"	Beige	15170090
	Black	15170091
115 41/64"	Beige	15170810
	Black	15170811
189 11/16"	Beige	15173298
	Black	15173398



## Weather Strip, Stile

V020

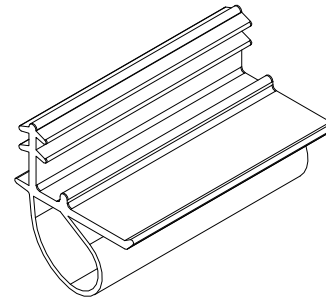
Length	Beige PN	Black PN
79 9/16"	11197968	N/A
92 15/16"	11197982	N/A
150"	11197999	11197998



## Inactive Panel Stile Center

V780

Length	Color	PN
150"	Beige	15174099
	Black	15174098





**Weather Strip, Frame**

No longer available, use current part.

Used: Pre 3-30-2009

## When ordering replacement panels, specify:

NOTE: Weather strip is included with all panels (where applicable).

1. OM of panel (NOTE: OM of panel does not include astragal, mull casing or sweep);
2. Active, Inactive or Stationary;
  - a. Active - comes prepped for multi-point mortise lock and standard Marvin handle set. If Marvin Architectural Hardware prep is needed, specify brand.
  - b. Inactive - comes prepped for multi-point lock and standard Marvin handle-set. If Marvin Architectural Hardware prep is needed, specify brand.
  - c. Stationary - specify configuration and astragal or mull casing (if applicable).
  - d. Panel style
3. Handing;
4. Glazing;
5. Finish;
6. Glazing bead profile;
  - a. bevel
  - b. square.
    - Active panels include panel sweep and multi-point mortise lock system.
    - Inactive panels include sweep, astragal, and multi-point lock system.
    - Stationary 1 wide panels include panel sweep.

