



# Elevate Glider DISC-LA PRE 2006

## Contents

### Replacement Parts

Specifications and technical data are subject to change without notice.

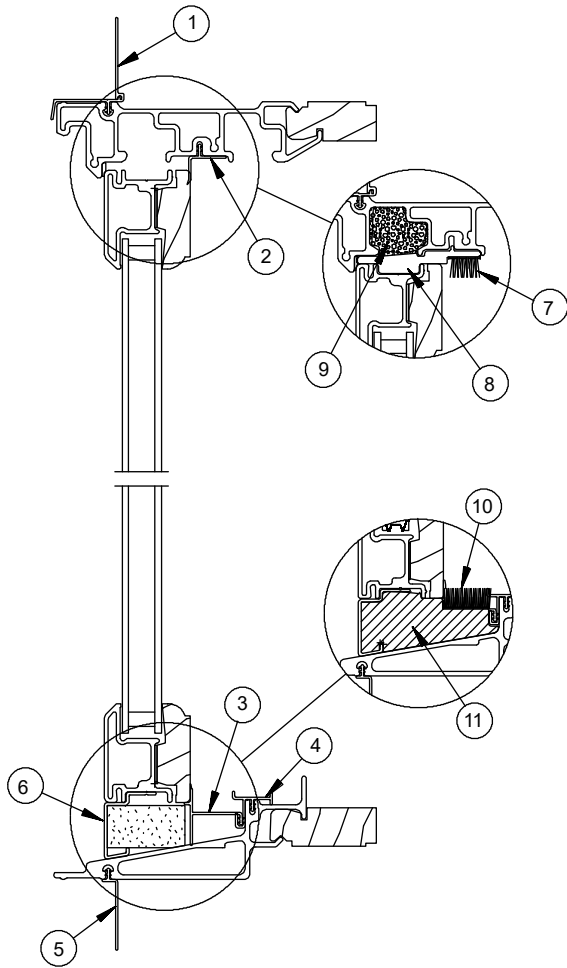
Numbers listed in ( ) parentheses are metric equivalents in millimeters rounded to the nearest whole number.

Suggested fasteners are not included and must be ordered separately.

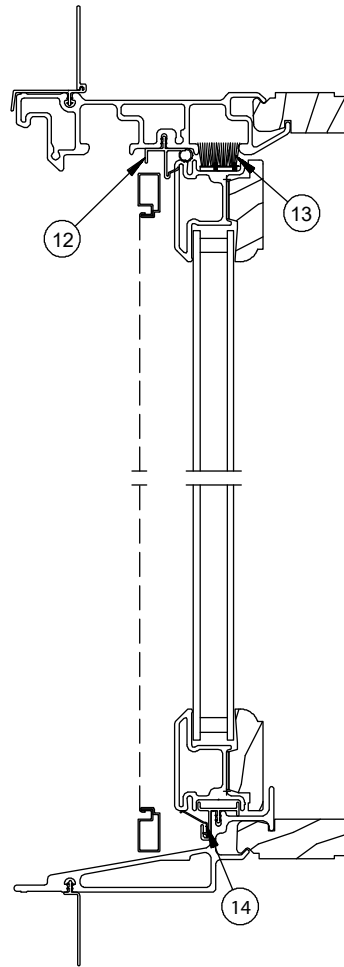
Illustrations are not to scale.

Product History.....	2
Part Identification - Operator .....	3
Part Identification - Triple Sash XOX Operator .....	4
Sash Hardware .....	5
Miscellaneous Parts .....	6
Miscellaneous Parts - Discontinued No Availability (NA).....	9
Aluminum Parts .....	10
Vinyl Parts.....	11
Vinyl Parts - Discontinued No Availability (NA) .....	13
Screen Replacement.....	14
Screen Parts .....	15
Screen Parts - Discontinued No Availability (NA).....	16
Sash Replacement - Configured Part in OMS .....	17

Produced	Unit Type	Features and Changes
1996	Glider	10/1996: Unit features 3/4 insulating Low E II glass with Argon, 4 9/16" jambs. Pultruded fiberglass (Ultrex) exterior available in white or pebble gray, one fixed and one operating sash, almond frost sash locks and a half screen available in white or pebble gray. Abbreviation: IGL. Introduced 5 5/16" and 6 13/16" jamb extension available shipped loose for field application.
1997	Glider	05/1997: Added wood profile side stop to operate jamb side. 06/1997: E-Gard coated hardware is now standard 09/1997: Introduced white grilles-between-the-glass (GBG) simulated divided lite option.
1998	Glider	07/1998: Reinforced design tilt latch cover added. 11/1998: Introduced white hardware and screen option.
2000	Glider	12/2000: 6 13/16" jamb extension available factory applied. 5 5/16" jamb extension no longer available.
2001	Glider	03/2001: Added white interior finish.
2002	Glider	02/2002: Stone White replacing Arctic White as a standard color effective February 4 Arctic White replacement parts available through the warranty period.
2004	Glider	03/01/2004: Pebble exterior/white interior GBGs added.
2006	Glider	01/2006: Sales and product were discontinued for the Pre 2006 Elevate Glider and replaced with the ELGL product line.
2019	Glider	12/16/2019: Discontinued the sale of Wood Removable Grilles.

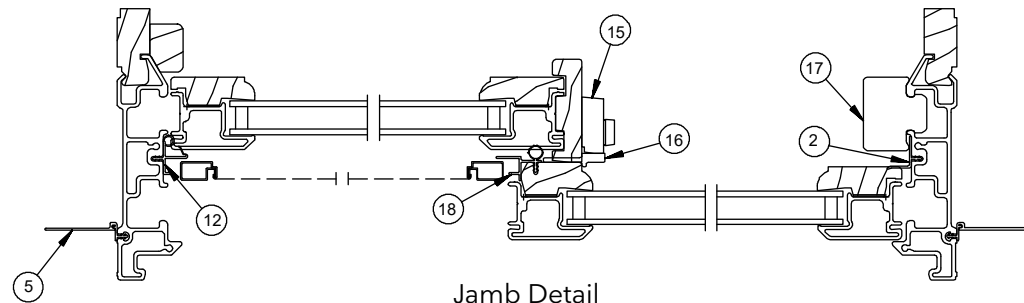


Stationary Head Jamb and Sill Detail

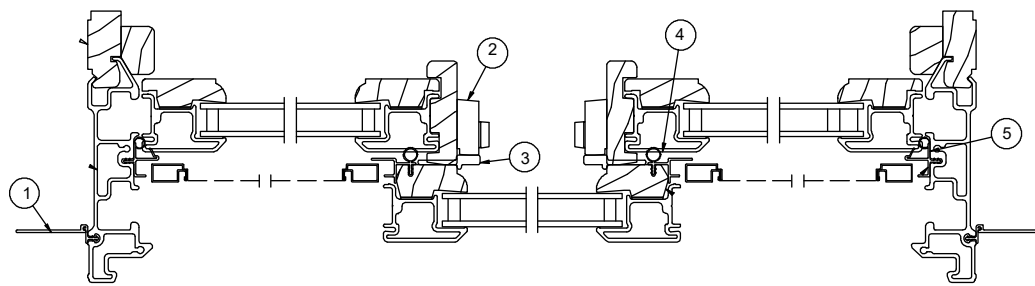


Operator Head Jamb and Sill Detail

1. Nailing Fin/Drip Cap
2. Stationary Stop, Jamb, V188
3. Sill Spacer, V186
4. Sill Track, V185
5. Sill Nailing Fin
6. Sill Filler, A441
7. Top Rail Dust Plug
8. Stationary Head Jamb Bracket
9. Head Jamb Plug
10. Bottom Rail Dust Plug
11. Stationary Sill Block
12. Jamb/Head Jamb Weather Strip/Screen Channel, V165
13. Head Jamb Dust Block
14. Sill Track, V185
15. Sash Lock
16. Sash Keeper
17. Operator Sash Stop
18. Jamb Weather Strip/Screen Channel, V163



Jamb Detail



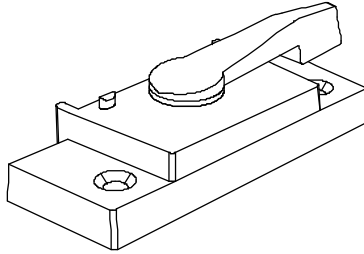
Jamb Detail

- 1. Jamb Nailing Fin
- 2. Sash Lock
- 3. Sash Keeper
- 4. Meeting Stile Weather Strip/Screen Channel, V163
- 5. Jamb/Head Jamb Weather Strip/Screen Channel, V165

## Sash Lock

Color	XO PN	OX PN
Almond Frost	10817035	10817037
White	10817027	10817028

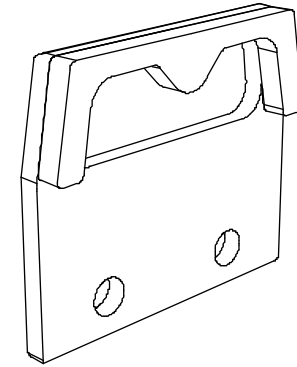
Suggested Fasteners	
2 – #6 x 1 1/4" Phillips flathead wood screws	
Color	PN
Almond Frost	11806001
White	11806002



## Sash Keeper

Color	PN
Almond Frost	10817036
White	10817029

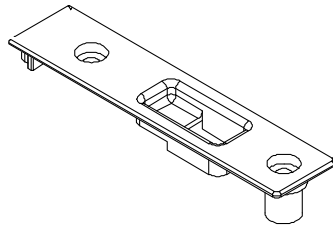
Suggested Fasteners	
2 – #8 x 1" Phillips pan head screws	
Color	PN
Almond Frost	11800814
White	11800820



## Tilt Latch Cover

Color	PN
Almond Frost	11869713
White	11869717

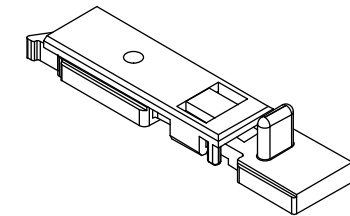
Suggested Fasteners	
2 – #8 x 1" Phillips pan head screws	
Color	PN
Almond Frost	11800814
White	11800820



## Tilt Latch

Color	LH PN	RH PN
Almond Frost	11869712	11869710
White	11869716	11869715

Suggested Fasteners	
2 – #8 x 3/4" Phillips truss head screws	
Color	PN
Almond Frost	11800833
White	11800828

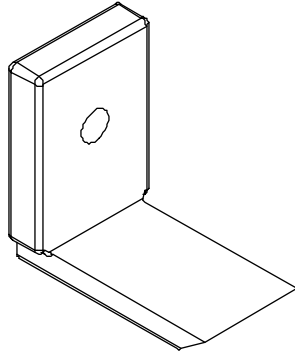


Right hand shown

## Jamb Stile Glide/Operator Sash

Color	PN
Almond Frost	11040322
White	11040328

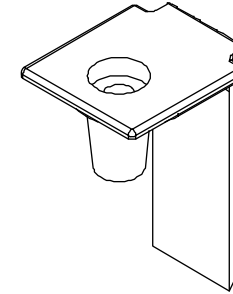
Suggested Fasteners	
2 – #8 x 1" Phillips pan head screws	
Color	PN
Almond Frost	11800814
White	11800820



## Meeting Stile Glide/Operator Sash

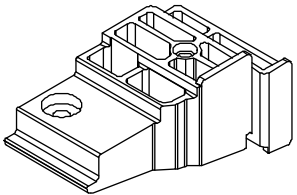
Color	PN
Almond Frost	11040323
White	11040329

Suggested Fasteners	
2 – #8 x 3/4" Phillips pan head screws	
Color	PN
Almond Frost	11800833
White	11800828



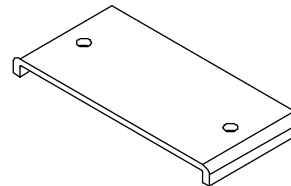
## Stationary Sill Block

Color	XO PN	OX PN
Pebble Gray	11040326	11040327
Stone White	11040334	11040335



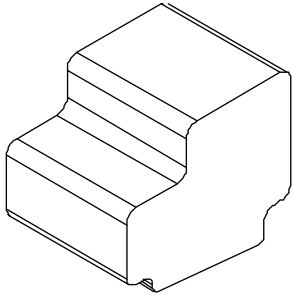
## Operator Sash Stop - Locking Plate Triple Sash

PN
11860109



## Head Jamb Plug

Color	PN
White	10500122

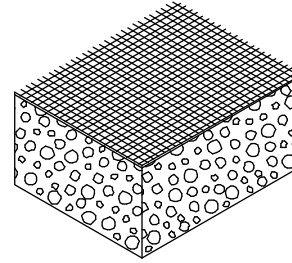


## Sill Weather Strip Support Block

5/8" x 5/16" x 1/2"

NOTE: Adhesive backed

Color	PN
Beige	15607567



## Head Jamb Dust Block

5/8" x 2 5/16" x 1/2"

NOTE: Adhesive backed

Color	PN
Gray	10500135

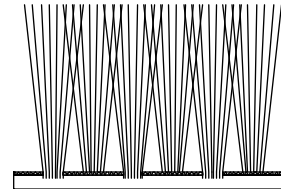


## Top Rail Dust Plug

1 1/4" x 9/16" x 3/8"

NOTE: Adhesive backed

Color	PN
Beige	10500121

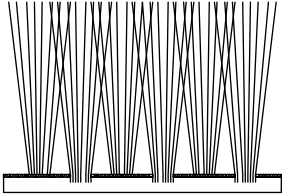


## Bottom Rail Dust Plug

13/16" x 9/16" x 3/8"

NOTE: Adhesive backed

Color	PN
Beige	10500120

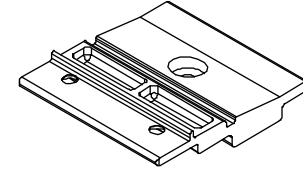


## Stationary Head Jamb Bracket

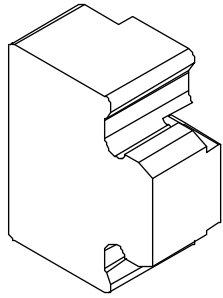
Color	PN
Beige	11040352

Suggested Fasteners (sash)	
1 – #8 x 3/4" Phillips pan head screw	
Color	PN
Almond Frost	11800833
White	11800828

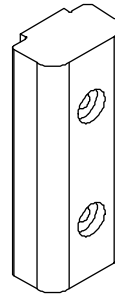
Suggested Fasteners (head jamb)	PN
1 – #8 x 5/8" Phillips flat head screw	11800499







**Operator Sash Stop**

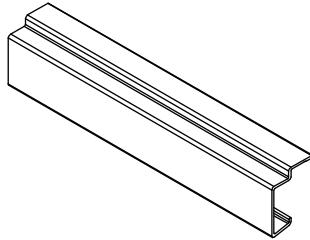


**Operator Sash Stop - Triple Sash**

## Sill Filler

A441

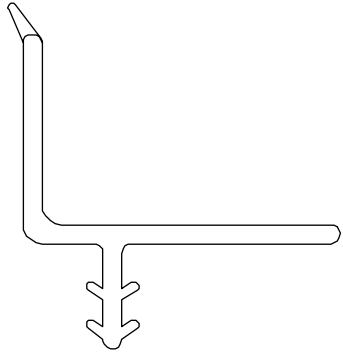
CN	Length	Stone White PN	Pebble Gray PN
36	17 1/8" (437)	19611437	18611537
48	23 1/8" (587)	19611427	18611527
60	29 1/8" (740)	19611460	18611560
72	35 1/8" (892)	19611439	18611539
96	49 3/64" (1246)	19611496	18611596



## Stationary Stop - Jamb

V188

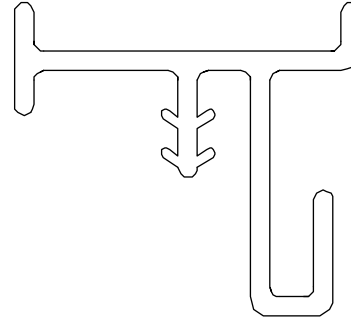
CN	Length	PN
60	57 17/32" (1461)	17000060



## Sill Track

V185

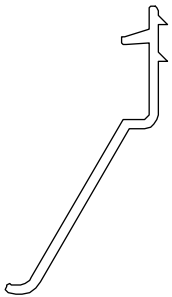
CN	Length	PN
96	94 1/2" (2400)	17007396



## Sill Weather Strip

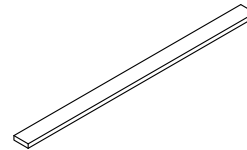
V673

CN	Length	PN
72	34 11/16" (881)	17007672



## Frame to Sash Seal

Color	Length	PN
Gray	150' (46 meters)	10501118

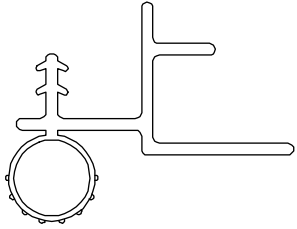


## Meeting Stile Weather Strip and Screen Channel

V163

NOTE: Square cut ends

CN	Length	XO PN	OX PN
60	57 7/8" (1470)	17001760	17001761

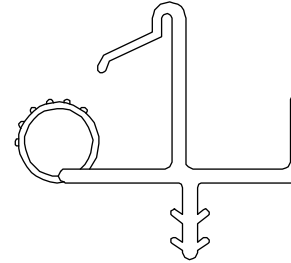


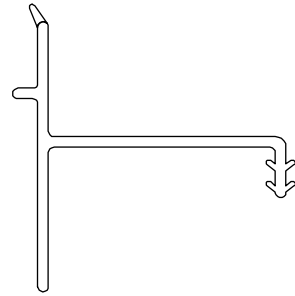
## Head Jamb/Jamb Weather Strip and Screen Channel

V165

NOTE: Square cut ends

CN	Length	PN
Lineal	60" (1524)	17001660





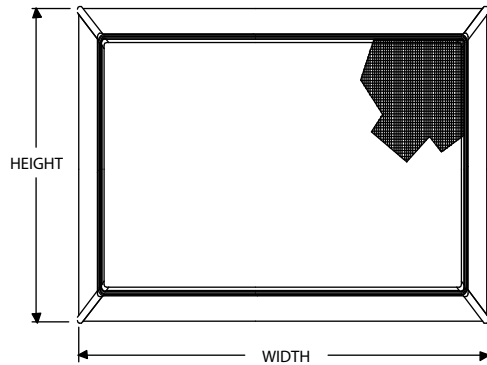
**Sill Spacer, V186**

**Ordering specifications (use all that apply):**

1. Use existing screen OM to order
2. Size: Determine the outside measurement of the existing screen and find the sizes that correspond to the width and height indicated in the following charts. If there is no existing screen to determine the OM of the screen, use the Daylight Opening to OM of screen conversions shown in the chart. The daylight opening is the measurement of visible glass from the interior of the unit;
3. Color

Screens are standard with a white or pebble gray aluminum surround. Standard mesh is Marvin Bright View™. Screens feature plunger type mounting system.

NOTE: Screen replacement used the correct Elevate Glider screen.



NOTE: OM of screen includes corner keys.

**Screen sizes for Elevate Glider DISC-LA PRE 2006  
Manufactured 1996 to January 2006**

**Daylight Opening to OM of Screen**

Daylight width + 2 5/32" = OM width of screen

Daylight height + 4 1/8" = OM height

CN Size	OM Width
36	15 27/32" (402)
48	21 27/32" (555)
60	27 27/32" (707)
72	33 27/32" (860)
96	41 27/32" (1055)

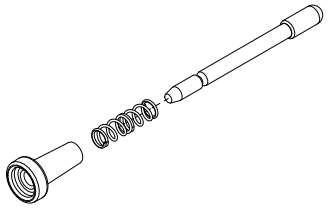
CN Size	OM Height
24	21 13/16" (554)
36	33 13/16" (859)
42	39 13/16" (1014)
48	45 13/16" (1164)
60	57 13/16" (1468)

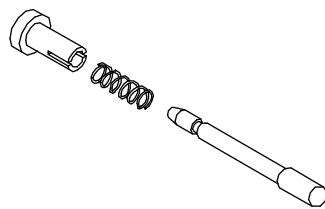
## Plunger and Spring Assembly

### Includes:

- 1 - Plunger bolt
- 1 - Plunger cap
- 1 - Plunger spring

<b>PN</b>
11851059





**Plunger and Spring Assembly**

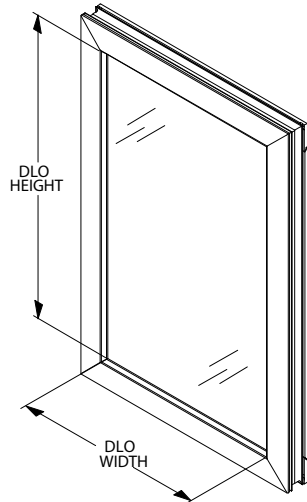
Clear cap, Off White bolt

Replace with current



**Ordering specifications (use all that apply):**

1. Size (CN or OM of sash)
2. Operating, stationary or picture
3. Stone White or Pebble Gray
4. Glazing
5. Bare Wood or White Interior



**Exterior View**

NOTE: Replacement sash is supplied with weather strip and hardware. Picture replacement sash includes attached sill filler and weather strip. Daylight opening is the measurement of visible glass from the interior.

NOTE: Sash is not reglazable; glass replacement will require a new sash.

**Sash sizes for Elevate Glider manufactured 1996 to January 2006**

**Daylight Opening to OM of sash**

Daylight width + 3 1/2" = OM width of sash

Daylight height + 3 1/2" = OM height of sash

Operator Sash Measurements	
CN Size	OM Width
36	17 3/16" (437)
48	23 3/16" (589)
60	29 3/16" (741)
72	35 3/16" (894)
96 (Stationary)	49 3/16" (1097)
96 (Operator)	23 3/16" (589)
Operator Sash Measurements	
CN Size	OM Height
24	21 3/16" (538)
36	33 3/16" (843)
42	39 3/16" (995)
48	45 3/16" (1148)
60	57 3/16" (1453)