

Ultimate Glider WOCD

Field Applied Instructions

Failure to follow these instructions may result in the window opening control devices (WOCDs) being ineffective in controlling the window opening.

A copy of the safety information shall be provided to the owner of the building in which the window opening control device (WOCD) is installed and to the occupant in the dwelling where the opening control device is installed (or is to be installed).

NOTE: This instruction is for Ultimate Glider (UGL). When installed and used as directed, the Window Opening Control Device meets the requirements of ASTM F2090-17.

Building and fire codes shall be consulted before installing WOCDs. Contact local building code department or fire department for specific applicable codes and install in accordance.

Follow manufacturer's assembly and installation instructions carefully. Failure to do so may result in accidental window falls.

NOTE: Available on all 2-panel and 3-panel sizes. Not available for OXXO units.

Required Tools:

- Phillips screwdriver (No. 2)
- Clamp
- WOCD Stile Jig (UGL)
- WOCD Check Rail Jig (UGL)
- 1/4" ID, 5/16" OD Router Guide
- Router Lock Nut
- Router
- 1/4" Dia. Router Bit for Wood
- 1/4" Dia. Router Bit for Fiberglass
- Two #7 x 7/8" screws
- Drill with 7/64" Drill Bit
- Vacuum

Parts needed or to be replaced:

- If the top or bottom sash is damaged, contact Customer Support, it may need to be replaced with a sash with factory-applied WOCD components. For kit details, refer to Table 1.



WARNING!

Possible Fall Hazard

- Young children may fall out of the window if the window opening control device (WOCD) is not installed correctly.
- Install the device so that a rigid 4.0-in. (102mm) diameter sphere does not pass through any space at the lowest opening portion in the window opening after the WOCD is in place.
- Young children may fall out of the window if all installation instructions are not followed.
- Use recommended materials and techniques.
- Make sure that the WOCD is securely installed in accordance with manufacturer's instructions.
- Make sure that the window frame is in good condition.

NOTE: Once installation of unit is complete, check WOCD for proper operation. When the sash is closed and locked, the WOCD should automatically engage.

Part No.	Description	Qty	Notes
19916116	Field Installation Instructions	1	
19916102	Hang Tag	1	
19915447	Safety and Operating Information	1	One for owner, copy for occupant
11718011	WOCD Sticker	1	
See notes	WOCD Assembly	1	part number depends on finish color
See notes	WOCD Assembly Screws	2	part number depends on finish color
See notes	WOCD Bumper	1	part number depends on finish color
11805150	WOCD Bumper Screw	1	

Table 1: Field-applied WOCD kit details

Field-Applied Install Process

IMPORTANT

Inspect all fabrication jigs before and after each use. Ensure steel inserts are not loose and do not show heavy wear. Contact Customer Support if a replacement is needed.

Primary Sash

NOTE: Lay sash on a flat surface and secure with a clamp before performing the following steps.

1. Remove screws from interlock. See [Figure 1](#).



Figure 1

2. Using a square and pencil, mark the 1 1/2" x 3/4" notch and remove material. See [Figure 2](#).

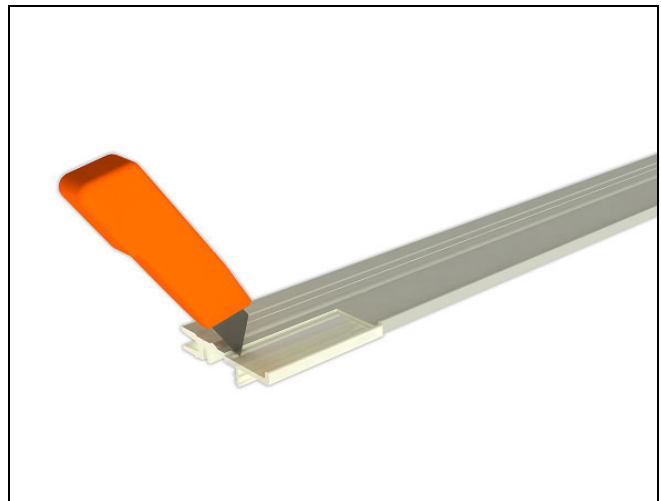


Figure 2

3. Install the window opening control bumper at the bottom of the sash and fasten with 1" screw. See [Figure 3](#).

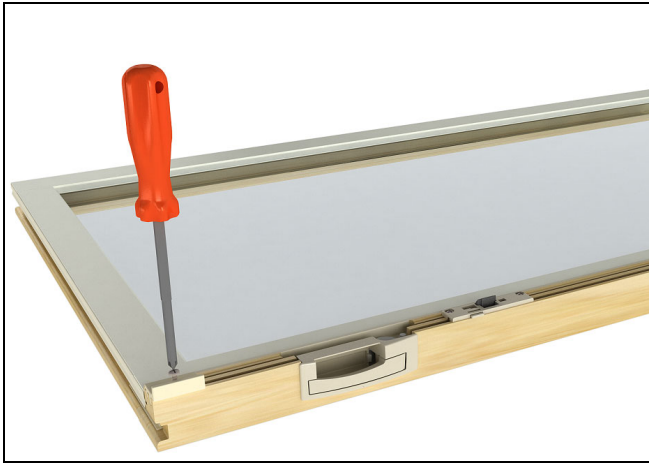


Figure 3

4. Reinstall the interlock using a wood block or rubber mallet (supplied by others) and reinstall the screws. See [Figure 4](#).



Figure 4

Secondary Sash

1. Lay sash on a flat surface. Remove the bottom rail glide blocks from the bottom rail. See [Figure 5](#).

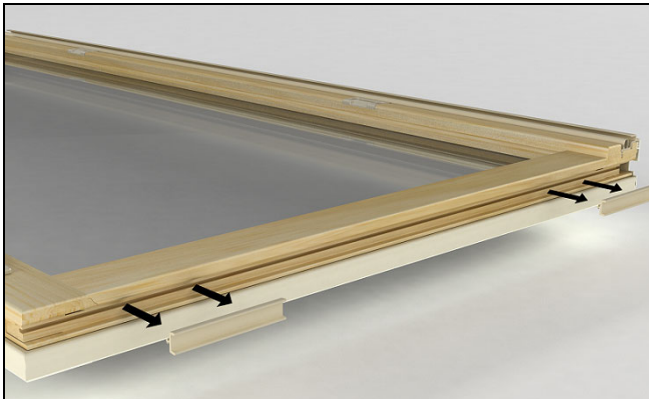


Figure 5

2. Place the jig on the bottom rail and position against the check rail. Secure with two #7 x 1" screws (not provided) into the bottom rail. See [Figure 6](#).



Figure 6

3. Set router depth to 13/16" and route. See [Figure 7](#).

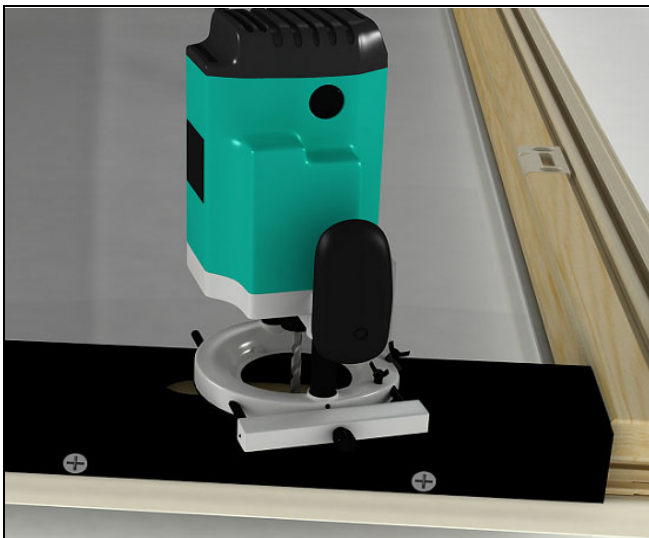


Figure 7

4. Remove the jig and clean debris and excess material. Install the window opening control device with the screws provided. See [Figure 8](#).

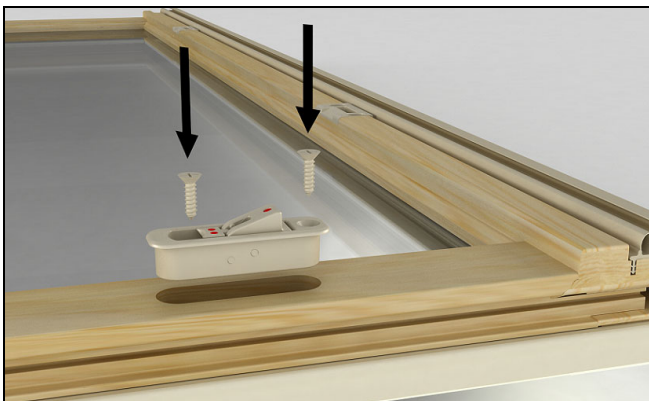


Figure 8

5. Apply the window opening control device sticker on the sill between the sill liner and sill track. See [Figure 9](#).



Figure 9