

Ultimate Inswing and Outswing French Door G2 Stationary Panel Replacement Service Instruction

ABSTRACT: Please read these instructions in their entirety before beginning to replace your Ultimate Inswing or Outswing French Door G2 panel.

Regional standard practices, environmental conditions, and codes may vary and supersede the procedures contained within. The responsibility for compliance is yours: the installer, inspector, and owner(s).

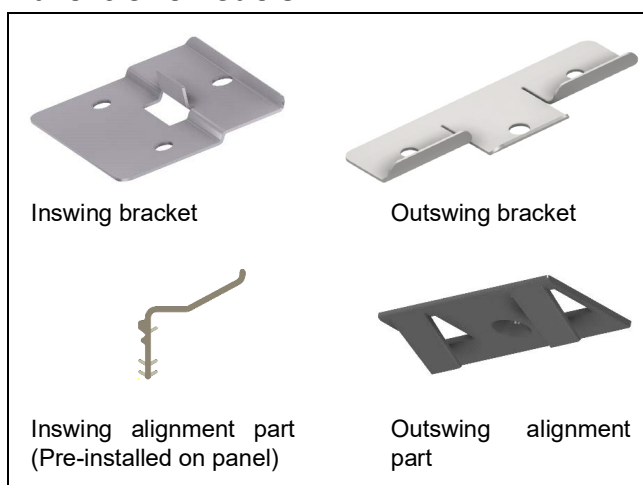
Tools and Supplies Needed

Drill jig: Inswing Door only

Per panel: Brackets, alignment parts

Per bracket: One stainless steel #10 x 3" flathead screw and two stainless steel #8 x 1 1/4" flathead screws

Part identification



Panel Removal

1. Stationary panels may need to be accessed by prior removal of adjacent panels. Screws along the head jamb and jamb will need to be cut (the first panel installed will not have screws through the head jamb). In an all-stationary configuration, removal starts with the last panel installed (this panel will not have a top stationary bolt or bottom stationary bolt/bracket on the side opposite the jamb). See [Figure 1](#).



Figure 1

2. In a configuration with active panels, remove the closest panel to the target stationary panel first. Refer to the [Ultimate Outswing Door G2 KD](#) and [Ultimate Inswing Door & Inswing French Door G2 KD](#) instructions for the steps that would be “reversed” for removal.

Bracket Placement

- Both bracket types follow the same rule. Values are measured “on center” on the brackets.
- *Top rail brackets* are only needed if there are spacer tacks in the head jamb above panel.

	Top and bottom bracket	Middle brackets
Stile	12” from panel top/bottom	16” spacing from bottom bracket. The two top-most brackets can be as close as 4” (center on center).
Stile (IZ)	12” from panel top/bottom	11” spacing from bottom bracket. The two top-most brackets can be as close as 4” (center on center).

1. Inswing brackets along a stile. [See Figure 2.](#)

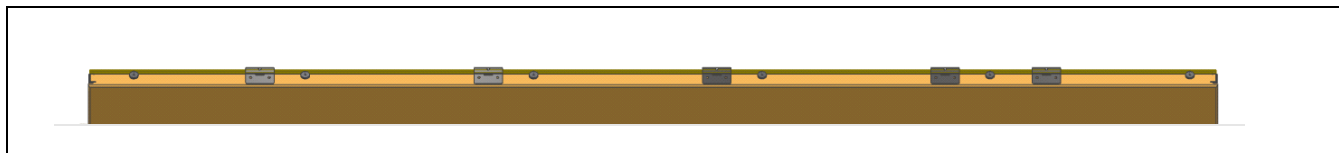


Figure 2

Top rail	8” from each side of the panel. One centered bracket can be used on panel widths <2-0
Top rail (IZ)	8” from each side of the panel, plus a third close to center (avoid the spacer tack).

2. Outswing brackets along a top rail. [See Figure 3.](#)

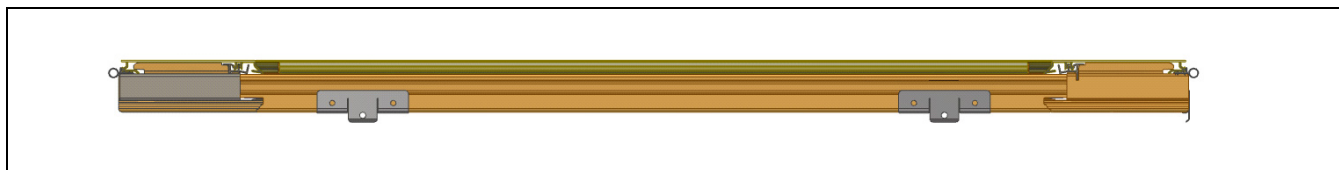


Figure 3

Bracket placement detail

1. Bracket placement for the Inswing Door, [See Figure 4](#).

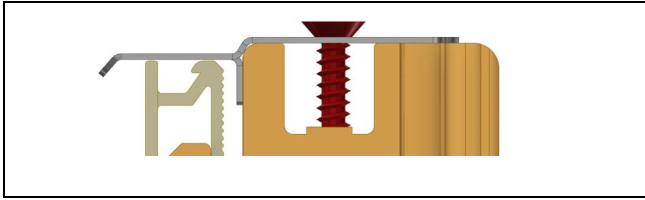


Figure 4

2. Bracket placement for the Outswing Door, [See Figure 5](#).

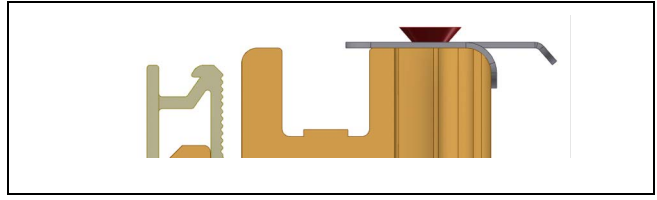


Figure 5

Outswing Stationary Panel

1. Refer to "Panel removal" to access and remove the stationary panel(s).

2. Replace the damaged alignment parts in the head jamb with new parts (provided).

3. Refer to "Bracket placement" and pencil mark the stile and rail positions on the panel.

1. Index bracket around the interior edge of the stile and rail. Pre-drill with a 1/8" bit and install the #8 screws. Repeat for each bracket. [See Figure 6](#).

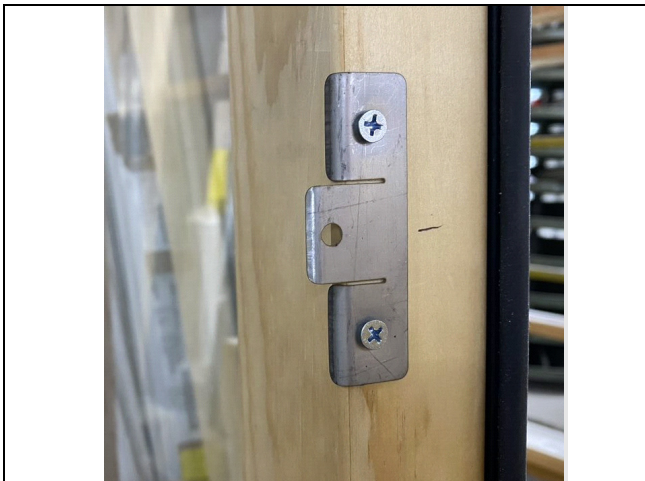


Figure 6



Figure 7

4. Replace part stops and move to the next panel.

2. Set and tip the panel back into the frame. See [Ultimate Outswing Door G2 KD](#) for more detail.

3. Bend a bracket's middle tab against the jamb, pre-drill **using the notch** in the vinyl as the "drill mark" and install the 3" screw. Repeat for each bracket. [See Figure 7](#).

Inswing Stationary Panel

1. Refer to "Panel removal" to access and remove the stationary panel(s).
2. Refer to "Bracket placement" and mark the stile and rail positions on the panel.
3. Index bracket around the exterior edge of the stile and rail. Pull the bracket towards the interior until the square tab stops against the wood. Pre-drill with a 1/8" bit and install the #8 screws. **STOP the drive of the screw just as the bracket starts to deform.** Repeat for each bracket. See [Figure 8](#).



Figure 8

4. Set the panel on the stationary blocks and start to tip the panel back in. Identify and label the sections of weather strip that the brackets will overlap. Slice the flexible portion of the weather strip at the location of the bracket edges. See [Figure 9](#).



Figure 9

5. Tip the panel fully into the frame. See [Ultimate Inswing Door & Inswing French Door G2 KD](#) for more detail.
6. Use a hard tool and bend bracket against the head jamb/jamb wood: See [Figure 10](#).

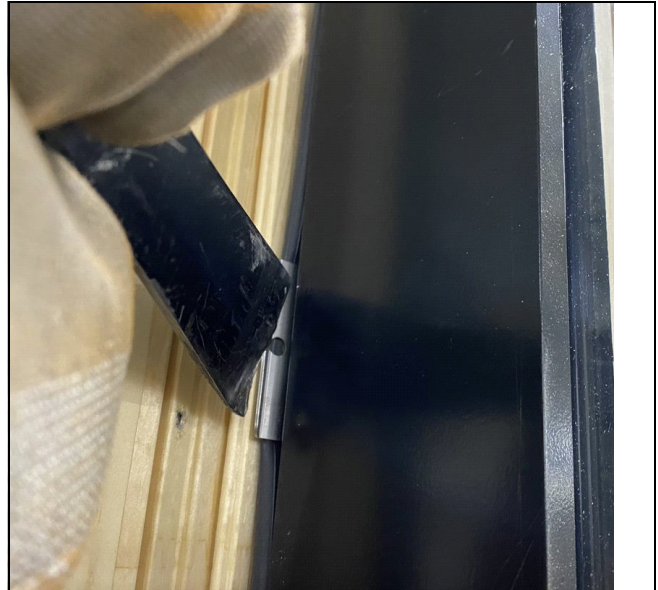


Figure 10

7. Place the drill jig over the bracket and push until the jig indexes into the wood geometry (**the jig also indexes the panel nominal position**). Hold this position and pre-drill with a 1/8" bit (adjust your bit to maximize the drilling depth). Repeat for each bracket. See [Figure 11](#), [Figure 12](#), and [Figure 13](#).

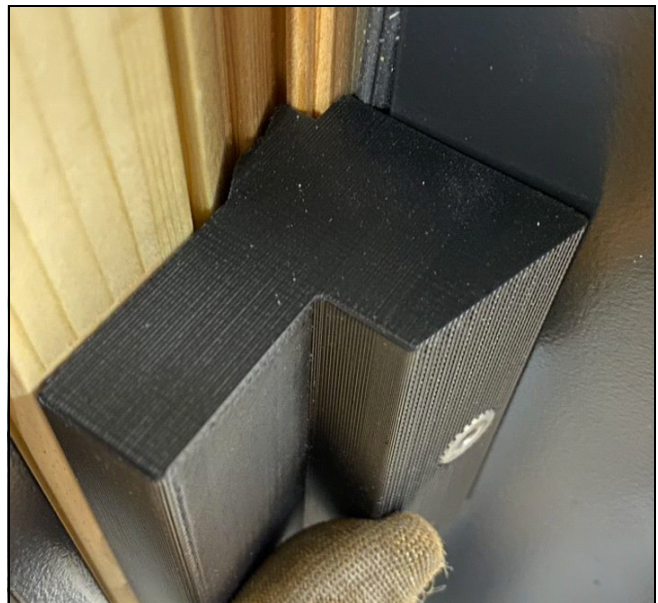


Figure 11

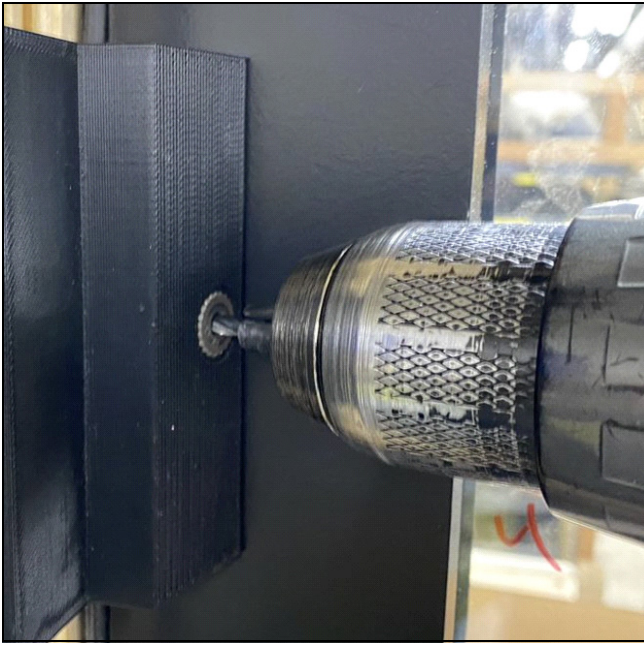


Figure 12



Figure 13 The cladding can be protected with nail fin or an extra bracket

8. Replace part stops and move to the next panel.